

## Anti-ATOH7 antibody (47-152) (STJ29412)

STJ29412

### GENERAL INFORMATION

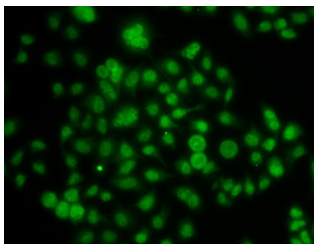
<b>Product Type</b>	Primary antibodies
<b>Short Description</b>	
<b>Applications</b>	WB/IF/IC/ELISA
<b>Host/Source</b>	Rabbit
<b>Reactivity</b>	Human

### PRODUCT PROPERTIES

<b>Clonality</b>	Polyclonal
<b>Clone ID</b>	
<b>Concentration</b>	Lot specific
<b>Conjugation</b>	Unconjugated
<b>Purification</b>	Affinity purification
<b>Dilution Range</b>	WB:1:500-1:2000 IF/IC:1:50-1:100 ELISA:Recommended starting concentration is 1 µg/mL. Please optimize the concentration based on your specific assay requirements.
<b>Formulation</b>	PBS with 0.02% Sodium Azide, 50% Glycerol, pH 7.3.
<b>Isotype</b>	IgG
<b>Storage</b>	Store at -20°C for up to 1 year from the date of receipt, and avoid repeat freeze-thaw cycles.
<b>Instruction</b>	

### TARGET INFORMATION

<b>Gene ID</b>	220202
<b>Gene Symbol</b>	ATOH7
<b>Uniprot ID</b>	ATO7_HUMAN
<b>Immunogen</b>	
<b>Immunogen Region</b>	47-152
<b>Specificity</b>	Recombinant fusion protein containing a sequence corresponding to amino acids 47-152 of human ATOH7 (NP_660161.1).
<b>Immunogen Sequence</b>	ARERRRMQGLNTAFDRLRRV VPQWGQDKKLSKYETLQMAL SYIMALTRILAEAEERFGSER DWVGLHCEHFGRDHYLPFG AKLPGESELYSQRLFGFQPE PFQMAT



Immunofluorescence analysis of A-549 cells using ATOH7 Rabbit polyclonal antibody (STJ29412). Secondary antibody: Cy3 Goat Anti-Rabbit IgG (H+L) at 1:500 dilution.