

Anti-EGR1 antibody (1-250) (STJ29407)
STJ29407

GENERAL INFORMATION

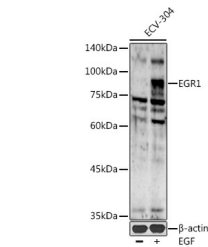
Product Type	Primary antibodies
Short Description	
Applications	WB/ELISA
Host/Source	Rabbit
Reactivity	Human/Mouse/Rat

PRODUCT PROPERTIES

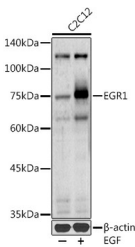
Clonality	Polyclonal
Clone ID	
Concentration	Lot specific
Conjugation	Unconjugated
Purification	Affinity purification
Dilution	WB:1:500-1:1000
Range	ELISA:Recommended starting concentration is 1 Mu g/mL. Please optimize the concentration based on your specific assay requirements.
Formulation	PBS with 0.01% Thimerosal, 50% Glycerol, pH 7.3.
Isotype	IgG
Storage	Store at -20°C for up to 1 year from the date of receipt, and avoid repeat freeze-thaw cycles.
Instruction	

TARGET INFORMATION

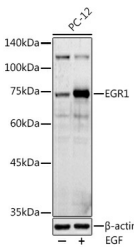
Gene ID	1958
Gene Symbol	EGR1
Uniprot ID	EGR1_HUMAN
Immunogen	
Immunogen Region	1-250
Specificity	Recombinant fusion protein containing a sequence corresponding to amino acids 1-250 of human EGR1 (NP_001955.1).
Immunogen Sequence	MAAAKAEMQLMSPLQISDPF GSFFPHSPTMDNYPKLEEMML LSNAGAPQLGAAGAPEGSGS NSSSSSSGGGGGGGGGSNSS SSSSTFNQADTGEQPYEHL TAESFPDISLNNKVLVETS YPSQTTRLPPITYTGRFSLE PAPNSGNTLWPEPLFSLVSG LYSMTNPPASSSSAPSPAAS SASASQSPPLSCAVPSNDSS PIYSAAPTFTPTNTDIFPEP QSQAFPGSAGTALQYPPPA



Western blot analysis of extracts of ECV-304 cells, using EGR1 antibody (STJ29407) at 1:1000 dilution. ECV-304 cells were treated by EGF (100 ng/ml) at 37 °C for 30 minutes after serum-starvation overnight. Secondary antibody: HRP Goat Anti-rabbit IgG (H+L) at 1:10000 dilution. Lysates/proteins: 25ug per lane. Blocking buffer: 3% nonfat dry milk in TBST. Detection: ECL Basic Kit. Exposure time: 180s.



Western blot analysis of extracts of C2C12 cells, using EGR1 antibody (STJ29407) at 1:1000 dilution. C2C12 cells were treated by EGF (100 ng/ml) at 37 °C for 30 minutes after serum-starvation overnight. Secondary antibody: HRP Goat Anti-rabbit IgG (H+L) at 1:10000 dilution. Lysates/proteins: 25ug per lane. Blocking buffer: 3% nonfat dry milk in TBST. Detection: ECL Basic Kit. Exposure time: 90s.



Western blot analysis of extracts of PC-12 cells, using EGR1 antibody (STJ29407) at 1:1000 dilution. PC-12 cells were treated by EGF (100 ng/ml) at 37 °C for 30 minutes after serum-starvation overnight. Secondary antibody: HRP Goat Anti-rabbit IgG (H+L) at 1:10000 dilution. Lysates/proteins: 25ug per lane. Blocking buffer: 3% nonfat dry milk in TBST. Detection: ECL Basic Kit. Exposure time: 90s.

This product is suitable for in-vitro studies under the RESEARCH USE ONLY [RUO] licence. This product must not be used as for diagnostic or other medical purposes.
St John's Laboratory Ltd, Knowledge Dock Business Centre, University Way, London, E16 2RD | Tel: 0208 223 3081