

Anti-Acetyl-Histone H4-K8 antibody (STJ29400)

STJ29400

GENERAL INFORMATION

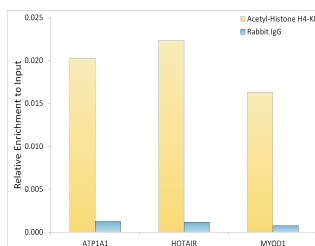
Product Type	Primary antibodies
Short Description	
Applications	WB/IHC-P/IF/ICC/ELISA/ChIP/ChIP-seq
Host/Source	Rabbit
Reactivity	Human/Mouse/Rat/Other

PRODUCT PROPERTIES

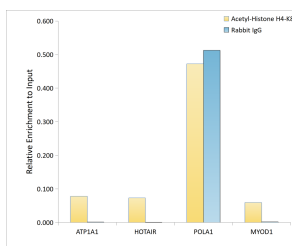
Clonality	Polyclonal
Clone ID	
Concentration	Lot specific
Conjugation	Unconjugated
Purification	Affinity purification
Dilution Range	WB:1:500-1:1000 IHC-P:1:50-1:200 IF/ICC:1:500-1:1000 ELISA:Recommended starting concentration is 1 Mu g/mL. Please optimize the concentration based on your specific assay requirements. ChIP:5 Mu g antibody for 5 Mu g-10 Mu g of Chroma
Formulation	PBS with 0.02% Sodium Azide, 50% Glycerol, pH 7.3.
Isotype	IgG
Storage Instruction	Store at -20°C for up to 1 year from the date of receipt, and avoid repeat freeze-thaw cycles.

TARGET INFORMATION

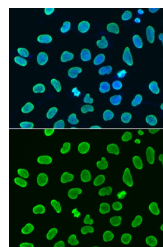
Gene ID	121504/554313/8294/8359/8360/8361/8362/8363/8364/8365/8366/8367/8368/8370
Gene Symbol	H4C1.H4C2.H4C3.H4C4.H4C5.H4C6.H4C8.H4C9.H4C11.H4C12.H4C13.H4C14.H4C15.H4C16
Uniprot ID	H4_HUMAN
Immunogen	GGKGL
Immunogen Region	
Specificity	A synthetic acetylated peptide around K8 of human Histone H4 (NP_003529.1).
Immunogen Sequence	GGKGL



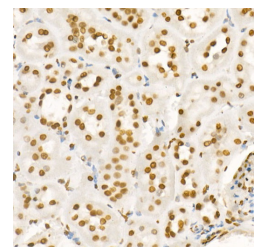
Chromatin immunoprecipitation was performed with 5 Mu g of cross-linked chromatin from HeLa, using 5 Mu g of Acetyl-Histone H4-K8 Rabbit polyclonal antibody (STJ29400) and Rabbit IgG isotype control. The enrichment of immunoprecipitated DNA at different genomic loci was examined by quantitative PCR. The histogram compares the ratio of the immunoprecipitated DNA to the input at given loci.



Chromatin immunoprecipitation analysis of extracts of HeLa cells, using Acetyl-Histone H4-K8 antibody (STJ29400) and rabbit IgG. The amount of immunoprecipitated DNA was checked by quantitative PCR. Histogram was constructed by the ratios of the immunoprecipitated DNA to the input.



Immunofluorescence analysis of HeLa cells using Acetyl-Histone H4-K8 Rabbit polyclonal antibody (STJ29400). Secondary antibody: Cy3 Goat Anti-Rabbit IgG (H+L) at 1:500 dilution. Blue: DAPI for nuclear staining.



Immunohistochemistry analysis of Acetyl-Histone H4-K8 in paraffin-embedded rat kidney using Acetyl-Histone H4-K8 Rabbit polyclonal antibody (STJ29400) at dilution of 1:20 (40x lens). Perform high pressure antigen retrieval with 10 mM citrate buffer pH 6.0 before commencing with immunohistochemistry staining protocol.

This product is suitable for in-vitro studies under the RESEARCH USE ONLY [RUO] licence. This product must not be used as for diagnostic or other medical purposes.
St John's Laboratory Ltd, Knowledge Dock Business Centre, University Way, London, E16 2RD | Tel: 0208 223 3081