

Anti-Phospho-PDPK1-S241 antibody (STJ29323)

STJ29323

GENERAL INFORMATION

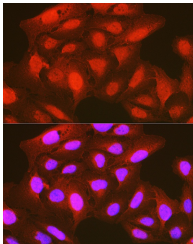
Product Type	Primary antibodies
Short Description	
Applications	WB/IF/ICC/ELISA
Host/Source	Rabbit
Reactivity	Human/Mouse/Rat

PRODUCT PROPERTIES

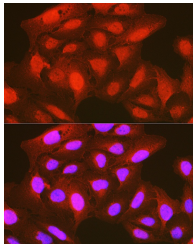
Clonality	Polyclonal
Clone ID	
Concentration	Lot specific
Conjugation	Unconjugated
Purification	Affinity purification
Dilution Range	WB:1:500-1:2000 IF/ICC:1:50-1:200 ELISA:Recommended starting concentration is 1 µg/mL. Please optimize the concentration based on your specific assay requirements.
Formulation	PBS with 0.01% Thimerosal, 50% Glycerol, pH 7.3.
Isotype	IgG
Storage Instruction	Store at -20°C for up to 1 year from the date of receipt, and avoid repeat freeze-thaw cycles.

TARGET INFORMATION

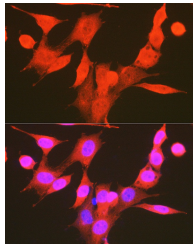
Gene ID	5170
Gene Symbol	PDPK1
Uniprot ID	PDPK1_HUMAN
Immunogen	ANSFV
Immunogen Region	
Specificity	A synthetic phosphorylated peptide around S241 of human PDK1/PDPK1 (NP_002604.1).
Immunogen Sequence	ANSFV



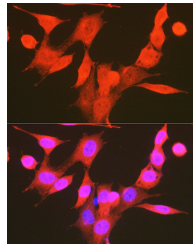
Western blot analysis of extracts of NIH/3T3 cells, using Phospho-PDK1/PDPK1-S241 polyclonal antibody (STJ29323) at 1:1000 dilution. NIH/3T3 cells were treated by PDGF (100 ng/mL) at 37 °C for 30 minutes after serum-starvation overnight. Secondary antibody: HRP-Goat Anti-rabbit IgG (H+L) at 1:10000 dilution. Lysates/proteins: 25µg per lane. Blocking buffer: 3% BSA. Detection: ECL Basic Kit. Exposure time: 60s.



Immunofluorescence analysis of U-2 OS cells using Phospho-PDK1/PDPK1-S241 Rabbit polyclonal antibody (STJ29323) at dilution of 1:100 (40x lens). Blue: DAPI for nuclear staining.



Immunofluorescence analysis of C6 cells using Phospho-PDK1/PDPK1-S241 rabbit polyclonal antibody (STJ29323) at dilution of 1:100 (40x lens). Blue: DAPI for nuclear staining.



Immunofluorescence analysis of NIH-3T3 cells using Phospho-PDK1/PDPK1-S241 Rabbit polyclonal antibody (STJ29323) at dilution of 1:100 (40x lens). Blue: DAPI for nuclear staining.

This product is suitable for in-vitro studies under the RESEARCH USE ONLY [RUO] licence. This product must not be used as for diagnostic or other medical purposes.
St John's Laboratory Ltd, Knowledge Dock Business Centre, University Way, London, E16 2RD | Tel: 0208 223 3081