

Anti-KLF3 antibody (1-240) (STJ29275)
STJ29275

GENERAL INFORMATION

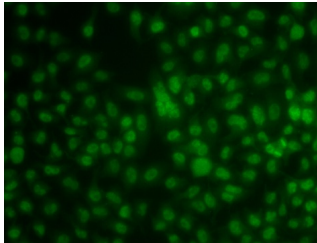
Product Type	Primary antibodies
Short Description	
Applications	WB/IF/ICC/ELISA
Host/Source	Rabbit
Reactivity	Human

PRODUCT PROPERTIES

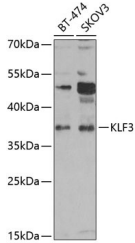
Clonality	Polyclonal
Clone ID	
Concentration	Lot specific
Conjugation	Unconjugated
Purification	Affinity purification
Dilution	WB:1:500-1:2000
Range	IF/CC:1:50-1:100 ELISA:Recommended starting concentration is 1 Mu g/mL. Please optimize the concentration based on your specific assay requirements.
Formulation	PBS with 0.02% Sodium Azide, 50% Glycerol, pH 7.3.
Isotype	IgG
Storage Instruction	Store at -20°C for up to 1 year from the date of receipt, and avoid repeat freeze-thaw cycles.

TARGET INFORMATION

Gene ID	51274
Gene Symbol	KLF3
Uniprot ID	KLF3_HUMAN
Immunogen	
Immunogen Region	1-240
Specificity	Recombinant fusion protein containing a sequence corresponding to amino acids 1-240 of human KLF3 (NP_057615.3).
Immunogen Sequence	MLMFDVPVPVKQEAMDPVSVS YPSNYMESMKPNKYGVIIYST PLPEKFFQTPEGLSHGIQME PVDLTVNKRSSPPSAGNSPS SLKFPSSHRRASPGLSMPSS SPPIKKYSPSPGVQPFQVPS LSMPPVMAAALSRHGIRSPG ILPVIQPVVVQPVPFMYTSH LQQLMVSLSSEEMENSSSSM QVPVIESYEKPISQKKIKIE PGIEPQRTDYYPEEMSPPLM NSVSPPQALLQENHPSVIV



Immunofluorescence analysis of A549 cells using KLF3 antibody (STJ29275).



Western blot analysis of extracts of various cell lines, using KLF3 antibody (STJ29275) at 1:1000 dilution. Secondary antibody: HRP Goat Anti-Rabbit IgG (H+L) (STJ3000856) at 1:10000 dilution. Lysates/proteins: 25 Mu g per lane. Blocking buffer: 3% nonfat dry milk in TBST. Detection: ECL Enhanced Kit. Exposure time: 60s.

This product is suitable for in-vitro studies under the RESEARCH USE ONLY [RUO] licence. This product must not be used as for diagnostic or other medical purposes.
St John's Laboratory Ltd, Knowledge Dock Business Centre, University Way, London, E16 2RD | Tel: 0208 223 3081