

Anti-KLF15 antibody (1-260) (STJ29274)

STJ29274

GENERAL INFORMATION

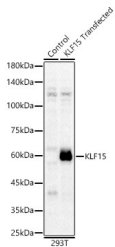
Product Type	Primary antibodies
Short Description	
Applications	WB/ELISA
Host/Source	Rabbit
Reactivity	Human

PRODUCT PROPERTIES

Clonality	Polyclonal
Clone ID	
Concentration	Lot specific
Conjugation	Unconjugated
Purification	Affinity purification
Dilution	WB:1:500-1:2000
Range	ELISA:Recommended starting concentration is 1 Mu g/mL. Please optimize the concentration based on your specific assay requirements.
Formulation	PBS with 0.02% Sodium Azide, 50% Glycerol, pH 7.3.
Isotype	IgG
Storage	Store at -20°C for up to 1 year from the date of receipt, and avoid repeat freeze-thaw cycles.
Instruction	

TARGET INFORMATION

Gene ID	28999
Gene Symbol	KLF15
Uniprot ID	KLF15_HUMAN
Immunogen	
Immunogen Region	1-260
Specificity	Recombinant fusion protein containing a sequence corresponding to amino acids 1-260 of human KLF15 (NP_054798.1).
Immunogen Sequence	MVDHLLPVDFNFSSPKCPVG YLGDRLVGRRAYHMLSPVS EDDSDASSPCSCSSPDSQAL CSCYGGGLGTESQDSILDFL LSQATLGSGGGSGSSIGASS GPVAWGPWRRAAAPVKGEHF CLPEFFPLGDPDDVPRPFQPT LEEIEEFLEENMEPGVKEVP EGNSKDLDACSQLSAGPHKS HLHPGSSGRERCSPPPGGAS AGGAQGPGGGPTPDGPVPL LQIQVPVVKQESGTGPASP



Western blot analysis of lysates from wild type (WT) and 293T cells transfected with KLF15 using KLF15 Rabbit polyclonal antibody (STJ29274) at 1:1000 dilution. Secondary antibody: HRP Goat Anti-Rabbit IgG (H+L) (STJ5000856) at 1:10000 dilution. Lysates/proteins: 25 Mu g per lane. Blocking buffer: 3% nonfat dry milk in TBST. Detection: ECL Basic Kit. Exposure time: 30s.

This product is suitable for in-vitro studies under the RESEARCH USE ONLY [RUO] licence. This product must not be used as for diagnostic or other medical purposes.
St John's Laboratory Ltd, Knowledge Dock Business Centre, University Way, London, E16 2RD | Tel: 0208 223 3081