

Anti-GTF2H3 antibody (1-308) (STJ29268)

STJ29268

GENERAL INFORMATION

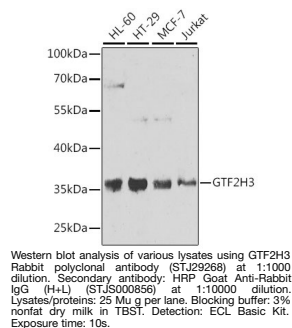
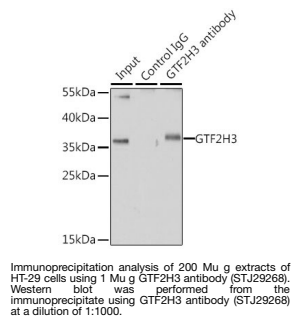
Product Type	Primary antibodies
Short Description	
Applications	WB/IP/ELISA
Host/Source	Rabbit
Reactivity	Human/Mouse

PRODUCT PROPERTIES

Clonality	Polyclonal
Clone ID	
Concentration	Lot specific
Conjugation	Unconjugated
Purification	Affinity purification
Dilution	WB:1:500-1:2000
Range	IP:0.5 Mu g-4 Mu g antibody for 200 Mu g-400 Mu g extracts of whole cells ELISA:Recommended starting concentration is 1 Mu g/mL. Please optimize the concentration based on your specific assay requirements.
Formulation	PBS with 0.02% Sodium Azide, 50% Glycerol, pH 7.3.
Isotype	IgG
Storage Instruction	Store at -20°C for up to 1 year from the date of receipt, and avoid repeat freeze-thaw cycles.

TARGET INFORMATION

Gene ID	2967
Gene Symbol	GTF2H3
Uniprot ID	TF2H3_HUMAN
Immunogen	
Immunogen Region	1-308
Specificity	Recombinant fusion protein containing a sequence corresponding to amino acids 1-308 of human GTF2H3 (NP_001507.2).
Immunogen Sequence	MVSDDELNLLVIVVDANPI WWGKQALKESQFTLSKCIDA VMVLGNSHLFMNRNKLAVI ASHIQESRFLYPGKNGRLGD FFGDPGNPPEFNPSGSKDGK YELLTSANEVIVEEIKDLMT KSDIKGQHTETLLAGSLAKA LCYIHRMNKEVKDNQEMKSR ILVIKAAEDSALQYMNFMNV IFAAQKQNILDACVLDSDS GLLQQACDITGGLYLKVPQM PSLQLYLLWVFLPDQDQRS



This product is suitable for in-vitro studies under the RESEARCH USE ONLY [RUO] licence. This product must not be used as for diagnostic or other medical purposes.

St John's Laboratory Ltd, Knowledge Dock Business Centre, University Way, London, E16 2RD | Tel: 0208 223 3081