

Anti-C16orf80 antibody (94-193) (STJ29179)

STJ29179

GENERAL INFORMATION

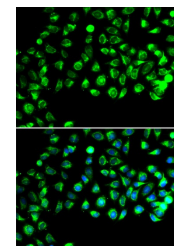
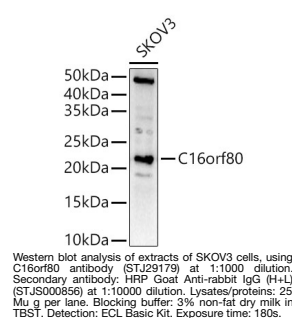
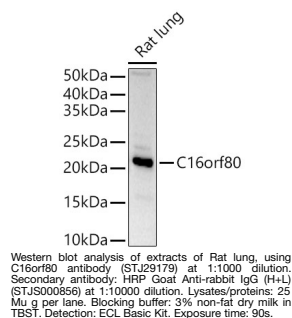
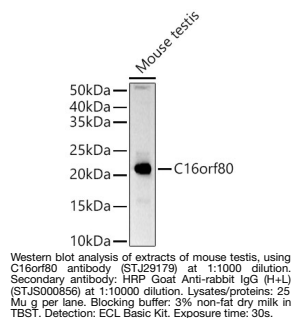
Product Type	Primary antibodies
Short Description	
Applications	WB/IF/ICC/ELISA
Host/Source	Rabbit
Reactivity	Human/Mouse/Rat

PRODUCT PROPERTIES

Clonality	Polyclonal
Clone ID	
Concentration	Lot specific
Conjugation	Unconjugated
Purification	Affinity purification
Dilution Range	WB:1:500-1:1000 IF/ICC:1:50-1:100 ELISA:Recommended starting concentration is 1 Mu g/mL. Please optimize the concentration based on your specific assay requirements.
Formulation	PBS with 0.02% Sodium Azide, 50% Glycerol, pH 7.3.
Isotype	IgG
Storage Instruction	Store at -20°C for up to 1 year from the date of receipt, and avoid repeat freeze-thaw cycles.

TARGET INFORMATION

Gene ID	29105
Gene Symbol	CFAP20
Uniprot ID	CFA20_HUMAN
Immunogen	
Immunogen Region	94-193
Specificity	A synthetic peptide corresponding to a sequence within amino acids 94-193 of human C16orf80 (NP_037374.1).
Immunogen Sequence	LDDKNVRRFRASNYQSTTR VKPFICTMPMRLDDGWNQIQ FNLLDFTRRAYGTNYIETLR VQIHANCHIRRVYFSDRLYS EDELPAEFKLYLPVQNKAKQ



Immunofluorescence analysis of A549 cells using C16orf80 antibody (STJ29179). Blue: DAPI for nuclear staining.

This product is suitable for in-vitro studies under the RESEARCH USE ONLY [RUO] licence. This product must not be used as for diagnostic or other medical purposes.
St John's Laboratory Ltd, Knowledge Dock Business Centre, University Way, London, E16 2RD | Tel: 0208 223 3081