

**Anti-STAMPB antibody (100-270) (STJ29145)**  
STJ29145

**GENERAL INFORMATION**

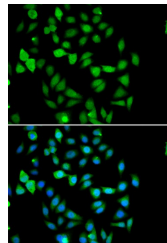
<b>Product Type</b>	Primary antibodies
<b>Short Description</b>	
<b>Applications</b>	WB/IHC-P/IF/ICC/IP/ELISA
<b>Host/Source</b>	Rabbit
<b>Reactivity</b>	Human/Mouse/Rat

**PRODUCT PROPERTIES**

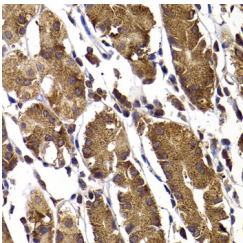
<b>Clonality</b>	Polyclonal
<b>Clone ID</b>	
<b>Concentration</b>	Lot specific
<b>Conjugation</b>	Unconjugated
<b>Purification</b>	Affinity purification
<b>Dilution</b>	WB:1:500-1:2000
<b>Range</b>	IHC-P:1:50-1:200 IF/ICC:1:50-1:100 IP:0.5 Mu g-4 Mu g antibody for 200 Mu g-400 Mu g extracts of whole cells ELISA:Recommended starting concentration is 1 Mu g/mL. Please optimize the concentration based on your specif
<b>Formulation</b>	PBS with 0.02% Sodium Azide, 50% Glycerol, pH 7.3.
<b>Isotype</b>	IgG
<b>Storage</b>	Store at-20°C for up to 1 year from the date of receipt, and avoid repeat freeze-thaw cycles.
<b>Instruction</b>	

**TARGET INFORMATION**

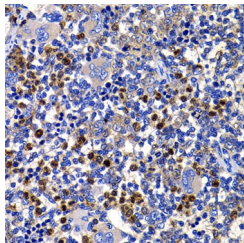
<b>Gene ID</b>	10617
<b>Gene Symbol</b>	STAMPB
<b>Uniprot ID</b>	STABP_HUMAN
<b>Immunogen</b>	
<b>Immunogen Region</b>	100-270
<b>Specificity</b>	Recombinant fusion protein containing a sequence corresponding to amino acids 100-270 of human STAMPB (NP_998787.1).
<b>Immunogen Sequence</b>	FPKAEELKAELLKRYTKEYT EYNEEKKKEAEELARNMAIQ QELEKEKQRVAQQKQQQLEQ EQFHAFEEMIRNQELEKERL KIVQEFQKVDPLGGPLVPD LEKPSLDVFPTLTVSSIQPS DCHTTRVPAKPPVVDRLKP GALSNSESIPTIDGLRHVVV PGRLCPQFLQL



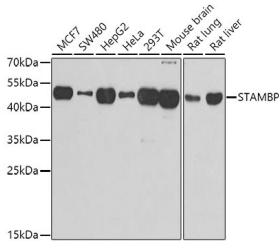
Immunofluorescence analysis of U2OS cells using STAMPB Rabbit polyclonal antibody (STJ29145). Secondary antibody: Cy3 Goat Anti-Rabbit IgG (H+L) at 1:500 dilution. Blue: DAPI for nuclear staining.



Immunohistochemistry analysis of STAMPB in paraffin-embedded human stomach using STAMPB Rabbit polyclonal antibody (STJ29145) at dilution of 1:100 (40x lens). Perform microwave antigen retrieval with 10 mM PBS buffer pH 7.2 before commencing with immunohistochemistry staining protocol.



Immunohistochemistry analysis of STAMPB in paraffin-embedded rat spleen using STAMPB Rabbit polyclonal antibody (STJ29145) at dilution of 1:100 (40x lens). Perform microwave antigen retrieval with 10 mM PBS buffer pH 7.2 before commencing with immunohistochemistry staining protocol.



Western blot analysis of various lysates using STAMPB Rabbit polyclonal antibody (STJ29145) at 1:1000 dilution. Secondary antibody: HRP Goat Anti-Rabbit IgG (H+L) (STJ5000856) at 1:10000 dilution. Lysates/proteins: 25 Mu g per lane. Blocking buffer: 3% nonfat dry milk in TBST. Detection: ECL Basic Kit. Exposure time: 30s.

This product is suitable for in-vitro studies under the RESEARCH USE ONLY [RUO] licence. This product must not be used as for diagnostic or other medical purposes.  
St John's Laboratory Ltd, Knowledge Dock Business Centre, University Way, London, E16 2RD | Tel: 0208 223 3081