

# Anti-SLC2A1 antibody (210-310) (STJ29062)

STJ29062

## GENERAL INFORMATION

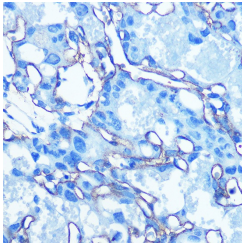
<b>Product Type</b>	Primary antibodies
<b>Short Description</b>	
<b>Applications</b>	WB/IHC-P/ELISA
<b>Host/Source</b>	Rabbit
<b>Reactivity</b>	Human/Mouse/Rat

## PRODUCT PROPERTIES

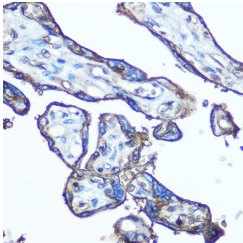
<b>Clonality</b>	Polyclonal
<b>Clone ID</b>	
<b>Concentration</b>	Lot specific
<b>Conjugation</b>	Unconjugated
<b>Purification</b>	Affinity purification
<b>Dilution Range</b>	WB:1:1000-1:5000 IHC-P:1:50-1:200 ELISA:Recommended starting concentration is 1 µg/mL. Please optimize the concentration based on your specific assay requirements.
<b>Formulation</b>	PBS with 0.05% Proclin300, 50% Glycerol, pH 7.3.
<b>Isotype</b>	IgG
<b>Storage Instruction</b>	Store at -20°C for up to 1 year from the date of receipt, and avoid repeat freeze-thaw cycles.

## TARGET INFORMATION

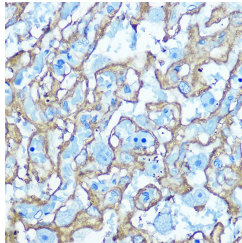
<b>Gene ID</b>	6513
<b>Gene Symbol</b>	SLC2A1
<b>Uniprot ID</b>	GTR1_HUMAN
<b>Immunogen</b>	
<b>Immunogen Region</b>	210-310
<b>Specificity</b>	A synthetic peptide corresponding to a sequence within amino acids 210-310 of human GLUT1/SLC2A1 (NP_006507.2).
<b>Immunogen Sequence</b>	SPRFLLINRNEENRAKSVLK KLRGTADVTHDLQEMKEESR QMMREKKVTILELFRSPAYR QPILIAVVLQLSQQLSGINA VFYYSTISFEKAGVQQPVYA T



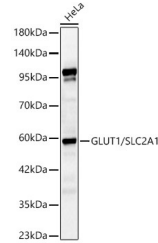
Immunohistochemistry analysis of GLUT1/SLC2A1 in paraffin-embedded mouse placenta using GLUT1/SLC2A1 Rabbit polyclonal antibody (STJ29062) at dilution of 1:100 (40x lens). Perform microwave antigen retrieval with 10 mM Tris/EDTA buffer pH 9.0 before commencing with immunohistochemistry staining protocol.



Immunohistochemistry analysis of GLUT1/SLC2A1 in paraffin-embedded human placenta using GLUT1/SLC2A1 Rabbit polyclonal antibody (STJ29062) at dilution of 1:100 (40x lens). Perform microwave antigen retrieval with 10 mM Tris/EDTA buffer pH 9.0 before commencing with immunohistochemistry staining protocol.



Immunohistochemistry analysis of GLUT1/SLC2A1 in paraffin-embedded rat placenta using GLUT1/SLC2A1 Rabbit polyclonal antibody (STJ29062) at dilution of 1:100 (40x lens). Perform microwave antigen retrieval with 10 mM Tris/EDTA buffer pH 9.0 before commencing with immunohistochemistry staining protocol.



Western blot analysis of lysates from HeLa cells using GLUT1/SLC2A1 Rabbit polyclonal antibody (STJ29062) at 1:2000 dilution. Secondary antibody: HRP Goat Anti-Rabbit IgG (H+L) (STJ5000856) at 1:10000 dilution. Lysates/proteins: 25µg per lane. Blocking buffer: 3% nonfat dry milk in TBST. Detection: ECL Basic Kit. Exposure time: 60s.

This product is suitable for in-vitro studies under the RESEARCH USE ONLY [RUO] licence. This product must not be used as for diagnostic or other medical purposes.  
St John's Laboratory Ltd, Knowledge Dock Business Centre, University Way, London, E16 2RD | Tel: 0208 223 3081