

Anti-SLC1A5 antibody (154-541) (STJ29061)

STJ29061

GENERAL INFORMATION

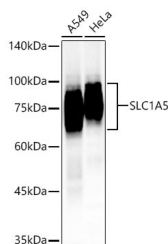
Product Type	Primary antibodies
Short Description	
Applications	WB/ELISA
Host/Source	Rabbit
Reactivity	Human/Mouse/Rat

PRODUCT PROPERTIES

Clonality	Polyclonal
Clone ID	
Concentration	Lot specific
Conjugation	Unconjugated
Purification	Affinity purification
Dilution Range	WB:1:500-1:1000 ELISA:Recommended starting concentration is 1 µg/mL. Please optimize the concentration based on your specific assay requirements.
Formulation	PBS with 0.02% Sodium Azide, 50% Glycerol, pH 7.3.
Isotype	IgG
Storage Instruction	Store at -20°C for up to 1 year from the date of receipt, and avoid repeat freeze-thaw cycles.

TARGET INFORMATION

Gene ID	6510
Gene Symbol	SLC1A5
Uniprot ID	AAAT_HUMAN
Immunogen	
Immunogen Region	154-541
Specificity	Recombinant fusion protein containing a sequence corresponding to amino acids 154-224 of human SLC1A5 (NP_005619.1).
Immunogen Sequence	QPGAASAAINASVGAAGSAE NAPSKEVLDSFLDLARNIFP SNLVSAAFRSYSTTYEERNI TGTRVKVPVGQ



Western blot analysis of various lysates using SLC1A5 Rabbit polyclonal antibody (STJ29061) at 1:1000 dilution. Secondary antibody:HRP Goat Anti-Rabbit IgG (H+L) (STJ5000856) at 1:10000 dilution. Lysates/ proteins: 25 µg per lane. Blocking buffer: 3 % nonfat dry milk in TBST. Detection:ECt. Basic Kit. Exposure time: 30s.

This product is suitable for in-vitro studies under the RESEARCH USE ONLY [RUO] licence. This product must not be used as for diagnostic or other medical purposes.
St John's Laboratory Ltd, Knowledge Dock Business Centre, University Way, London, E16 2RD | Tel: 0208 223 3081