

Anti-RPLP2 antibody (1-115) (STJ29054)

STJ29054

GENERAL INFORMATION

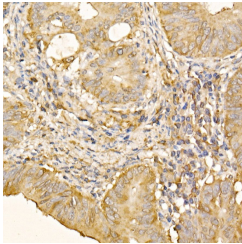
Product Type	Primary antibodies
Short Description	
Applications	IHC-P/IF/ICC/ELISA
Host/Source	Rabbit
Reactivity	Human/Mouse/Rat

PRODUCT PROPERTIES

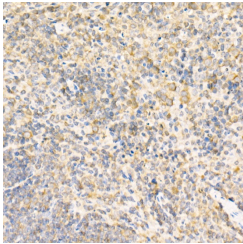
Clonality	Polyclonal
Clone ID	
Concentration	Lot specific
Conjugation	Unconjugated
Purification	Affinity purification
Dilution Range	IHC-P:1:100-1:500 IF/ICC:1:50-1:100 ELISA:Recommended starting concentration is 1 µg/mL. Please optimize the concentration based on your specific assay requirements.
Formulation	PBS with 0.02% Sodium Azide, 50% Glycerol, pH 7.3.
Isotype	IgG
Storage Instruction	Store at -20°C for up to 1 year from the date of receipt, and avoid repeat freeze-thaw cycles.

TARGET INFORMATION

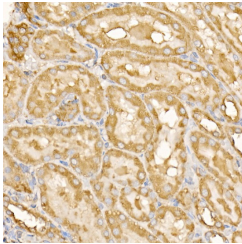
Gene ID	6181
Gene Symbol	RPLP2
Uniprot ID	RLA2_HUMAN
Immunogen	
Immunogen Region	1-115
Specificity	Recombinant fusion protein containing a sequence corresponding to amino acids 1-115 of human RPLP2 (NP_000995.1).
Immunogen Sequence	MRYVASYLLAALGGNSSPSA KDIKKILDSVGIEADDDRLN KVISLNGKNIEDVIAQGIG KLASVPAGGAVAVSAAPGSA APAAGSAPAAAEKKDEKKE ESEESDDDMGFGFLFD



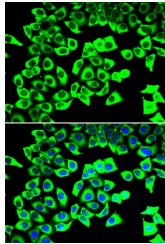
Immunohistochemistry analysis of paraffin-embedded human colon carcinoma using RPLP2 rabbit polyclonal antibody (STJ29054) at dilution of 1:500 (40x lens). Perform high pressure antigen retrieval with 10 mM citrate buffer pH 6.0 before commencing with immunohistochemistry staining protocol.



Immunohistochemistry analysis of paraffin-embedded mouse spleen using RPLP2 rabbit polyclonal antibody (STJ29054) at dilution of 1:500 (40x lens). Perform high pressure antigen retrieval with 10 mM citrate buffer pH 6.0 before commencing with immunohistochemistry staining protocol.



Immunohistochemistry analysis of paraffin-embedded rat kidney using RPLP2 rabbit polyclonal antibody (STJ29054) at dilution of 1:500 (40x lens). Perform high pressure antigen retrieval with 10 mM citrate buffer pH 6.0 before commencing with immunohistochemistry staining protocol.



Immunofluorescence analysis of U2OS cells using RPLP2 antibody (STJ29054). Blue: DAPI for nuclear staining.

This product is suitable for in-vitro studies under the RESEARCH USE ONLY [RUO] licence. This product must not be used as for diagnostic or other medical purposes.
St John's Laboratory Ltd, Knowledge Dock Business Centre, University Way, London, E16 2RD | Tel: 0208 223 3081