

Anti-RLN2 antibody (25-185) (STJ29049)

STJ29049

GENERAL INFORMATION

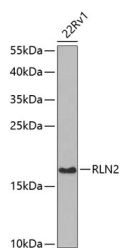
Product Type	Primary antibodies
Short Description	
Applications	WB/IHC-P/ELISA
Host/Source	Rabbit
Reactivity	Human/Rat

PRODUCT PROPERTIES

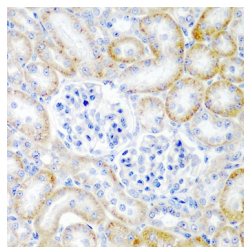
Clonality	Polyclonal
Clone ID	
Concentration	Lot specific
Conjugation	Unconjugated
Purification	Affinity purification
Dilution	WB:1:500-1:2000
Range	IHC-P:1:50-1:200 ELISA:Recommended starting concentration is 1 µg/mL. Please optimize the concentration based on your specific assay requirements.
Formulation	PBS with 0.02% Sodium Azide, 50% Glycerol, pH 7.3.
Isotype	IgG
Storage Instruction	Store at -20°C for up to 1 year from the date of receipt, and avoid repeat freeze-thaw cycles.

TARGET INFORMATION

Gene ID	6019
Gene Symbol	RLN2
Uniprot ID	REL2_HUMAN
Immunogen	
Immunogen Region	25-185
Specificity	Recombinant fusion protein containing a sequence corresponding to amino acids 25-185 of human RLN2 (NP_604390.1).
Immunogen Sequence	DSWMEEVIKLCGRELVRQI AICGMSTWSKRSLSQEDAPQ TPRPVAEIVPSFINKDTETI NMMSEFVANLPQELKLTSE MQPALPQLQHQHVPVLKDSSL LFEFFKKLIRNRQSEADSS PSELKYLGLDTHSRKKRQLY SALANKCCHVGCTKRSLARF C



Western blot analysis of extracts of 22Rv1 cells, using RLN2 antibody (STJ29049) at 1:1000 dilution. Secondary antibody: HRP-Goat Anti-rabbit IgG (H+L) at 1:10000 dilution. Lysates/proteins: 25 µg per lane. Blocking buffer: 3% nonfat dry milk in TBST. Detection: ECL Basic Kit. Exposure time: 30s.



Immunohistochemistry of paraffin-embedded rat kidney using RLN2 antibody (STJ29049) at dilution of 1:200 (40x lens).

This product is suitable for in-vitro studies under the RESEARCH USE ONLY [RUO] licence. This product must not be used as for diagnostic or other medical purposes.
St John's Laboratory Ltd, Knowledge Dock Business Centre, University Way, London, E16 2RD | Tel: 0208 223 3081