

Anti-RARRES2 antibody (17-163) (STJ29043)

STJ29043

GENERAL INFORMATION

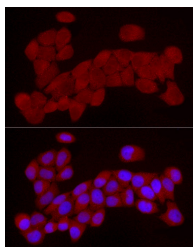
Product Type	Primary antibodies
Short Description	
Applications	WB/IF/ICC/ELISA
Host/Source	Rabbit
Reactivity	Human/Mouse

PRODUCT PROPERTIES

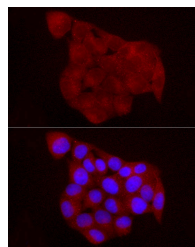
Clonality	Polyclonal
Clone ID	
Concentration	Lot specific
Conjugation	Unconjugated
Purification	Affinity purification
Dilution	WB:1:500-1:2000
Range	IF/CC:1:50-1:200
	ELISA:Recommended starting concentration is 1 μ g/mL. Please optimize the concentration based on your specific assay requirements.
Formulation	PBS with 0.05% Proclin300, 50% Glycerol, pH 7.3.
Isotype	IgG
Storage Instruction	Store at -20°C for up to 1 year from the date of receipt, and avoid repeat freeze-thaw cycles.

TARGET INFORMATION

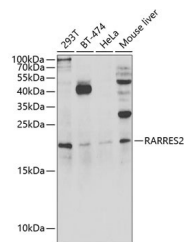
Gene ID	5919
Gene Symbol	RARRES2
Uniprot ID	RARR2_HUMAN
Immunogen	
Immunogen Region	17-163
Specificity	Recombinant fusion protein containing a sequence corresponding to amino acids 17-163 of human RARRES2 (NP_002880.1).
Immunogen Sequence	VGVAELTEAQRRLQVALEE FHKHPPVQWAFQETSVESAV DTPFPAGIFVRLEFKLQQTSCRKRDWKKPECKVRPNGRKR KCLACIKLGSEDKVLGRLVH CPIETQVLRREEHQETQCL RVQRAGEDPHSFYFPGQFAF SKALPRS



Immunofluorescence analysis of HeLa cells using RARRES2 Rabbit polyclonal antibody (STJ29043) at dilution of 1:25 (40x lens). Blue: DAPI for nuclear staining.



Immunofluorescence analysis of HeLa cells using RARRES2 Rabbit polyclonal antibody (STJ29043) at dilution of 1:50 (40x lens). Blue: DAPI for nuclear staining.



Western blot analysis of extracts of various cell lines, using RARRES2 antibody (STJ29043) at 1:1000 dilution. Secondary antibody: HRP Goat Anti-Rabbit IgG (H+L) (STJS000856) at 1:10000 dilution. Lysates/proteins: 25 μ g per lane. Blocking buffer: 3% nonfat dry milk in TBST. Detection: ECL Enhanced Kit. Exposure time: 15min.