

Anti-PPL antibody (1-130) (STJ29030)

STJ29030

GENERAL INFORMATION

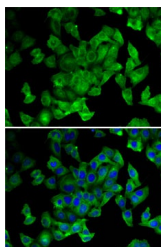
Product Type	Primary antibodies
Short Description	
Applications	WB/IF/ICC/ELISA
Host/Source	Rabbit
Reactivity	Human/Mouse/Rat

PRODUCT PROPERTIES

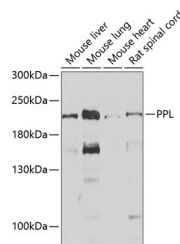
Clonality	Polyclonal
Clone ID	
Concentration	Lot specific
Conjugation	Unconjugated
Purification	Affinity purification
Dilution Range	WB:1:500-1:2000 IF/ICC:1:50-1:100 ELISA:Recommended starting concentration is 1 µg/mL. Please optimize the concentration based on your specific assay requirements.
Formulation	PBS with 0.02% Sodium Azide, 50% Glycerol, pH 7.3.
Isotype	IgG
Storage Instruction	Store at -20°C for up to 1 year from the date of receipt, and avoid repeat freeze-thaw cycles.

TARGET INFORMATION

Gene ID	5493
Gene Symbol	PPL
Uniprot ID	PEPL_HUMAN
Immunogen	
Immunogen Region	1-130
Specificity	Recombinant fusion protein containing a sequence corresponding to amino acids 1-130 of human PPL (NP_002696.3).
Immunogen Sequence	MNSLFRKRNGKYSPTVQTR SISNKELSELIEQLQKNADQ VEKNIVDTEAKMQSDLARLQ EGRQPEHRDVTLQKVLDSK LLYVLEADAAIAKHKHPQG DMAEDIRQLKERVNLRGK HKQIYRLAVK



Immunofluorescence analysis of MCF7 cells using PPL antibody (STJ29030). Blue: DAPI for nuclear staining.



Western blot analysis of extracts of various cell lines, using PPL antibody (STJ29030) at 1:1000 dilution. Secondary antibody: HRP Goat Anti-Rabbit IgG (H+L) (STJS000856) at 1:10000 dilution. Lysates/proteins: 25 µg per lane. Blocking buffer: 3% nonfat dry milk in TBST. Detection: ECL Enhanced Kit. Exposure time: 30s.

This product is suitable for in-vitro studies under the RESEARCH USE ONLY [RUO] licence. This product must not be used as for diagnostic or other medical purposes.
St John's Laboratory Ltd, Knowledge Dock Business Centre, University Way, London, E16 2RD | Tel: 0208 223 3081