

## Anti-PDE6B antibody (1-190) (STJ29022)

STJ29022

### GENERAL INFORMATION

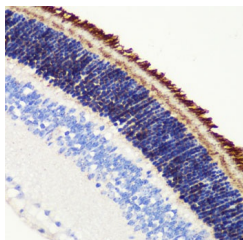
<b>Product Type</b>	Primary antibodies
<b>Short Description</b>	
<b>Applications</b>	WB/IHC-P/ELISA
<b>Host/Source</b>	Rabbit
<b>Reactivity</b>	Human/Mouse/Rat

### PRODUCT PROPERTIES

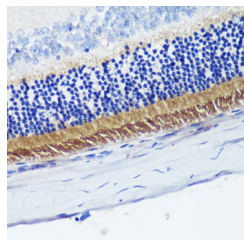
<b>Clonality</b>	Polyclonal
<b>Clone ID</b>	
<b>Concentration</b>	Lot specific
<b>Conjugation</b>	Unconjugated
<b>Purification</b>	Affinity purification
<b>Dilution</b>	WB:1:500-1:2000
<b>Range</b>	IHC-P:1:50-1:100
	ELISA:Recommended starting concentration is 1 $\mu$ g/mL. Please optimize the concentration based on your specific assay requirements.
<b>Formulation</b>	PBS with 0.02% Sodium Azide, 50% Glycerol, pH 7.3.
<b>Isotype</b>	IgG
<b>Storage Instruction</b>	Store at -20°C for up to 1 year from the date of receipt, and avoid repeat freeze-thaw cycles.

### TARGET INFORMATION

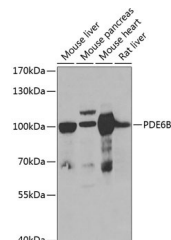
<b>Gene ID</b>	5158
<b>Gene Symbol</b>	PDE6B
<b>Uniprot ID</b>	PDE6B_HUMAN
<b>Immunogen</b>	
<b>Immunogen Region</b>	1-190
<b>Specificity</b>	Recombinant fusion protein containing a sequence corresponding to amino acids 1-190 of human PDE6B (NP_001138763.1).
<b>Immunogen Sequence</b>	MSLSEEQARSFLDQNPDFAR QYFGKKLSPENVAACEDGC PPDCDSLRLDLCQVEESTALL ELVQDMQESINMERVVFKVL RRLCTLLQADRCSLFMYRQR NGVAELATRLFSVQPDVLE DCLVPPDSEIVFLDIGVVG HVAQTKMKMVNVEDVAECPHF SSFADSLTDYKTKNMLATPI MNGKDWAVI



Immunohistochemistry analysis of paraffin-embedded mouse retina using PDE6B antibody (STJ29022) at dilution of 1:200 (40x lens). Perform microwave antigen retrieval with 10 mM PBS buffer pH 7.2 before commencing with immunohistochemistry staining protocol.



Immunohistochemistry analysis of paraffin-embedded rat retina using PDE6B antibody (STJ29022) at dilution of 1:200 (40x lens). Perform microwave antigen retrieval with 10 mM PBS buffer pH 7.2 before commencing with immunohistochemistry staining protocol.



Western blot analysis of extracts of various cell lines, using PDE6B antibody (STJ29022) at 1:1000 dilution. Secondary antibody: HRP Goat Anti-Rabbit IgG (H+L) (STJ5000856) at 1:10000 dilution. Lysates/proteins: 25  $\mu$ g per lane. Blocking buffer: 3% nonfat dry milk in TBST. Detection: ECL Basic Kit. Exposure time: 90s.

This product is suitable for in-vitro studies under the RESEARCH USE ONLY [RUO] licence. This product must not be used as for diagnostic or other medical purposes.  
St John's Laboratory Ltd, Knowledge Dock Business Centre, University Way, London, E16 2RD | Tel: 0208 223 3081