

Anti-HLA-DMA antibody (27-233) (STJ29002)

STJ29002

GENERAL INFORMATION

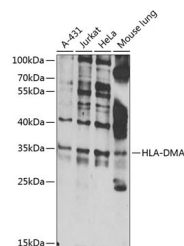
Product Type	Primary antibodies
Short Description	
Applications	WB/ELISA
Host/Source	Rabbit
Reactivity	Human/Mouse

PRODUCT PROPERTIES

Clonality	Polyclonal
Clone ID	
Concentration	Lot specific
Conjugation	Unconjugated
Purification	Affinity purification
Dilution	WB: 1:500-1:2000
Range	ELISA: Recommended starting concentration is 1 µg/mL. Please optimize the concentration based on your specific assay requirements.
Formulation	PBS with 0.02% Sodium Azide, 50% Glycerol, pH 7.3.
Isotype	IgG
Storage	Store at -20°C for up to 1 year from the date of receipt, and avoid repeat freeze-thaw cycles.
Instruction	

TARGET INFORMATION

Gene ID	
Gene Symbol	HLA-DMA
Uniprot ID	DMA_HUMAN
Immunogen	
Immunogen Region	27-233
Specificity	Recombinant fusion protein containing a sequence corresponding to amino acids 27-233 of human HLA-DMA (NP_006111.2).
Immunogen Sequence	VPEAPTPMWPDDLQNHFTFLH TVYCQDGSPSVGLSEAYDED QLFFDFSQNTRVPRLPEFA DWAQEQGDAPAILFDKEFCE WMIQQIGPKLDGKIPVSRGF PIAEVFTLKPLEFGKPNTLV CFVSNLFPMLTVNWQHHSV PVEGFGPTFVSAVDGLSFQA FSYLNFTPEPSDIFSCIVTH EIDRYTAIAYWVPRNALPSD LLENVLC



Western blot analysis of extracts of various cell lines, using HLA-DMA antibody (STJ29002) at 1:1000 dilution. Secondary antibody: HRP-Coat Anti-Rabbit IgG (H+L) (STJ5000856) at 1:10000 dilution. Lysates/proteins: 25 µg per lane. Blocking buffer: 3% nonfat dry milk in TBST. Detection: ECL Basic Kit. Exposure time: 30s.

This product is suitable for in-vitro studies under the RESEARCH USE ONLY [RUO] licence. This product must not be used as for diagnostic or other medical purposes.
St John's Laboratory Ltd, Knowledge Dock Business Centre, University Way, London, E16 2RD | Tel: 0208 223 3081