

Anti-FABP6 antibody (1-128) (STJ28986)

STJ28986

GENERAL INFORMATION

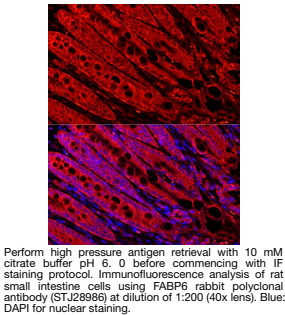
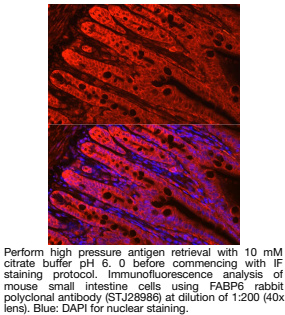
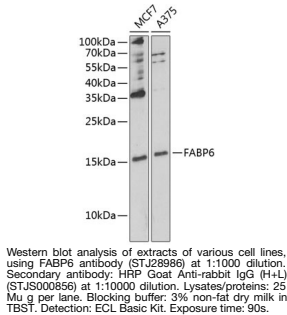
Product Type	Primary antibodies
Short Description	
Applications	WB/IF/ICC/ELISA
Host/Source	Rabbit
Reactivity	Human/Mouse/Rat

PRODUCT PROPERTIES

Clonality	Polyclonal
Clone ID	
Concentration	Lot specific
Conjugation	Unconjugated
Purification	Affinity purification
Dilution Range	WB:1:500-1:1000 IF/ICC:1:50-1:200 ELISA:Recommended starting concentration is 1 μ g/mL. Please optimize the concentration based on your specific assay requirements.
Formulation	PBS with 0.02% Sodium Azide, 50% Glycerol, pH 7.3.
Isotype	IgG
Storage Instruction	Store at -20°C for up to 1 year from the date of receipt, and avoid repeat freeze-thaw cycles.

TARGET INFORMATION

Gene ID	2172
Gene Symbol	FABP6
Uniprot ID	FABP6_HUMAN
Immunogen	
Immunogen Region	1-128
Specificity	Recombinant fusion protein containing a sequence corresponding to amino acids 1-128 of human FABP6 (NP_001436.1).
Immunogen Sequence	MAFTGKFESEKNDYDFMK LLGISSDVIEKARNFKIVTE VQQDGGDFTWSQHYSGGHTM TNKFTVGKESNIQTMGGKTF KATVQMEGGKLVNFPNYHQ TSEIVGDKLVEVSTIGGVTV ERVSKRLA



This product is suitable for in-vitro studies under the RESEARCH USE ONLY [RUO] licence. This product must not be used as for diagnostic or other medical purposes.
St John's Laboratory Ltd, Knowledge Dock Business Centre, University Way, London, E16 2RD | Tel: 0208 223 3081