

## Anti-DACH1 antibody (450-570) (STJ28975)

STJ28975

### GENERAL INFORMATION

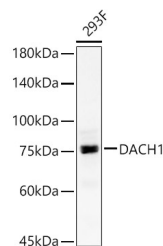
<b>Product Type</b>	Primary antibodies
<b>Short Description</b>	
<b>Applications</b>	WB/ELISA
<b>Host/Source</b>	Rabbit
<b>Reactivity</b>	Human/Mouse/Rat

### PRODUCT PROPERTIES

<b>Clonality</b>	Polyclonal
<b>Clone ID</b>	
<b>Concentration</b>	Lot specific
<b>Conjugation</b>	Unconjugated
<b>Purification</b>	Affinity purification
<b>Dilution Range</b>	WB:1:500-1:1000 ELISA:Recommended starting concentration is 1 µg/mL. Please optimize the concentration based on your specific assay requirements.
<b>Formulation</b>	PBS with 0.02% Sodium Azide, 50% Glycerol, pH 7.3.
<b>Isotype</b>	IgG
<b>Storage</b>	Store at -20°C for up to 1 year from the date of receipt, and avoid repeat freeze-thaw cycles.
<b>Instruction</b>	

### TARGET INFORMATION

<b>Gene ID</b>	1602
<b>Gene Symbol</b>	DACH1
<b>Uniprot ID</b>	DACH1_HUMAN
<b>Immunogen</b>	
<b>Immunogen Region</b>	450-570
<b>Specificity</b>	Recombinant fusion protein containing a sequence corresponding to amino acids 450-570 of human DACH1 (NP_542937.2).
<b>Immunogen Sequence</b>	EGRRPGSHPSHRSSSVSSS PARTESSSDRIPVHQGLSM NQMLMGLSPNVLPGPKEGDL AGHDMGHESKRMHIEKDETP LSTPTARDSLKLSLTGHGQ PLPPGFSPFLPDGLSSIE T



Western blot analysis of 293F using DACH1 antibody (STJ28975) at 1:500 dilution. Secondary antibody: HRP Goat Anti-Rabbit IgG (H+L) (STJ5000856) at 1:10000 dilution. Lysates/proteins: 25 µg per lane. Blocking buffer: 3% nonfat dry milk in TBST. Detection: ECL Basic Kit. Exposure time: 30s.

This product is suitable for in-vitro studies under the RESEARCH USE ONLY [RUO] licence. This product must not be used as for diagnostic or other medical purposes.  
St John's Laboratory Ltd, Knowledge Dock Business Centre, University Way, London, E16 2RD | Tel: 0208 223 3081