

## Anti-ALOX15B antibody (1-351) (STJ28945)

STJ28945

### GENERAL INFORMATION

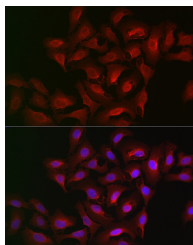
<b>Product Type</b>	Primary antibodies
<b>Short Description</b>	
<b>Applications</b>	WB/IF/ICC/ELISA
<b>Host/Source</b>	Rabbit
<b>Reactivity</b>	Human/Mouse/Rat

### PRODUCT PROPERTIES

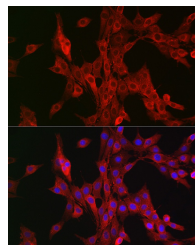
<b>Clonality</b>	Polyclonal
<b>Clone ID</b>	
<b>Concentration</b>	Lot specific
<b>Conjugation</b>	Unconjugated
<b>Purification</b>	Affinity purification
<b>Dilution</b>	WB: 1:500-1:1000
<b>Range</b>	IF/ICC: 1:50-1:200
	ELISA: Recommended starting concentration is 1 $\mu$ g/mL. Please optimize the concentration based on your specific assay requirements.
<b>Formulation</b>	PBS with 0.05% Proclin300, 50% Glycerol, pH 7.3.
<b>Isotype</b>	IgG
<b>Storage</b>	Store at -20°C for up to 1 year from the date of receipt, and avoid repeat freeze-thaw cycles.
<b>Instruction</b>	

### TARGET INFORMATION

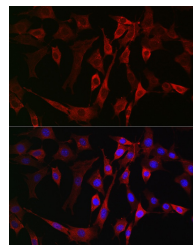
<b>Gene ID</b>	247
<b>Gene Symbol</b>	ALOX15B
<b>Uniprot ID</b>	LX15B_HUMAN
<b>Immunogen</b>	
<b>Immunogen Region</b>	1-351
<b>Specificity</b>	Recombinant fusion protein containing a sequence corresponding to amino acids 1-200 of human ALOX15B (NP_001132.2).
<b>Immunogen Sequence</b>	MAEFRVRVSTGEAFGAGTWD KVSVSIVGTRGESPLPLDN LGKEFTAGAEEDFQVTLPED VGRVLLLRVHKAPPVPLLLG PLAPDAWFCRWFLTPPRGG HLLFPCYQWLEGAGTLVLQE GTAKVSWADHHPVLQQQRQE ELQARQEMYQWKAYNPGWPH CLDEKTVDELNLKYSTAK NANFYLQAGSAFAEMKIKGL



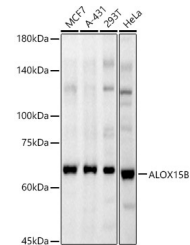
Immunofluorescence analysis of U2OS cells using ALOX15B Rabbit polyclonal antibody (STJ28945) at dilution of 1:100 (40x lens). Secondary antibody: Cy3 Goat Anti-Rabbit IgG (H+L) at 1:500 dilution. Blue: DAPI for nuclear staining.



Immunofluorescence analysis of PC-12 cells using ALOX15B Rabbit polyclonal antibody (STJ28945) at dilution of 1:100 (40x lens). Secondary antibody: Cy3 Goat Anti-Rabbit IgG (H+L) at 1:500 dilution. Blue: DAPI for nuclear staining.



Immunofluorescence analysis of NIH/3T3 cells using ALOX15B Rabbit polyclonal antibody (STJ28945) at dilution of 1:100 (40x lens). Secondary antibody: Cy3 Goat Anti-Rabbit IgG (H+L) at 1:500 dilution. Blue: DAPI for nuclear staining.



Western blot analysis of various lysates, using ALOX15B Rabbit polyclonal antibody (STJ28945) at 1:500 dilution. Secondary antibody: HRP Goat Anti-Rabbit IgG (H+L) (STJ5000858) at 1:10000 dilution. Lysates/proteins: 25  $\mu$ g per lane. Blocking buffer: 3% nonfat dry milk in TBST. Detection: ECL Basic Kit. Exposure time: 10s.

This product is suitable for in-vitro studies under the RESEARCH USE ONLY [RUO] licence. This product must not be used as for diagnostic or other medical purposes.

St John's Laboratory Ltd, Knowledge Dock Business Centre, University Way, London, E16 2RD | Tel: 0208 223 3081