

Anti-WFDC2 antibody (31-124) (STJ28871)

STJ28871

GENERAL INFORMATION

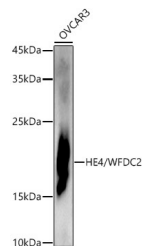
Product Type	Primary antibodies
Short Description	
Applications	WB/IF/CC/ELISA
Host/Source	Rabbit
Reactivity	Human/Mouse/Rat

PRODUCT PROPERTIES

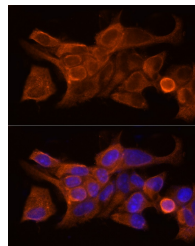
Clonality	Polyclonal
Clone ID	
Concentration	Lot specific
Conjugation	Unconjugated
Purification	Affinity purification
Dilution Range	WB:1:500-1:1000 IF/CC:1:50-1:200 ELISA:Recommended starting concentration is 1 µg/mL. Please optimize the concentration based on your specific assay requirements.
Formulation	PBS with 0.05% Proclin300, 50% Glycerol, pH 7.3.
Isotype	IgG
Storage Instruction	Store at -20°C for up to 1 year from the date of receipt, and avoid repeat freeze-thaw cycles.

TARGET INFORMATION

Gene ID	10406
Gene Symbol	WFDC2
Uniprot ID	WFDC2_HUMAN
Immunogen	
Immunogen Region	31-124
Specificity	Recombinant fusion protein containing a sequence corresponding to amino acids 31-124 of human HE4/WFDC2 (NP_006094.3).
Immunogen Sequence	EKTGVCPQLQADQNCTQECV SDSECADNLKCCSAGCATFC SLPNDKEGSCPVNINFPQL GLCRDQCQVDSQCPGQMKCC RNGCGKVSCVTPNF



Western blot analysis of extracts of OVCAR3 cells, using HE4/WFDC2 antibody (STJ28871) at 1:1000 dilution. Secondary antibody: HRP Goat Anti-rabbit IgG (H+L) (STJ5000656) at 1:10000 dilution. Lysates/proteins: 25 µg per lane. Blocking buffer: 3% non-fat dry milk in TBST. Detection: ECL Enhanced Kit. Exposure time: 180s.



Immunofluorescence analysis of MCF7 cells using HE4/WFDC2 rabbit polyclonal antibody (STJ28871) at dilution of 1:50 (40x lens). Blue: DAPI for nuclear staining.

This product is suitable for in-vitro studies under the RESEARCH USE ONLY [RUO] licence. This product must not be used as for diagnostic or other medical purposes.
St John's Laboratory Ltd, Knowledge Dock Business Centre, University Way, London, E16 2RD | Tel: 0208 223 3081