

Anti-DCAF7 antibody (1-342) (STJ28870)

STJ28870

GENERAL INFORMATION

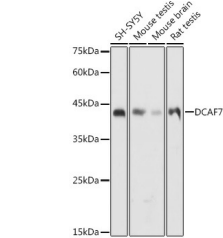
Product Type	Primary antibodies
Short Description	
Applications	WB/IHC-P/IF/ICC/ELISA
Host/Source	Rabbit
Reactivity	Human/Mouse/Rat

PRODUCT PROPERTIES

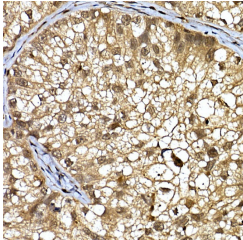
Clonality	Polyclonal
Clone ID	
Concentration	Lot specific
Conjugation	Unconjugated
Purification	Affinity purification
Dilution	WB: 1:500-1:1000
Range	IHC-P: 1:50-1:200 IF/ICC: 1:50-1:200 ELISA: Recommended starting concentration is 1 µg/mL. Please optimize the concentration based on your specific assay requirements.
Formulation	PBS with 0.05% Proclin300, 50% Glycerol, pH 7.3.
Isotype	IgG
Storage	Store at -20°C for up to 1 year from the date of receipt, and avoid repeat freeze-thaw cycles.
Instruction	

TARGET INFORMATION

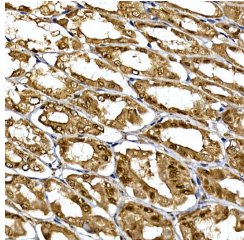
Gene ID	10238
Gene Symbol	DCAF7
Uniprot ID	DCAF7_HUMAN
Immunogen	
Immunogen Region	1-342
Specificity	Recombinant fusion protein containing a sequence corresponding to amino acids 1-342 of human DCAF7 (NP_005819.3).
Immunogen Sequence	MSLHGKRKEIKYEAPWTVY AMNWSVRPDKRFRALGFSV EEYNNKVLVGLDEESSEFI CRNTFDHPYPTTKLMWIPDT KGVYPDLLATSGDYLRVWRV GETETRLCECLNNKNNSDFC APLTSFDWNEVDPYLLGTSS IDTTCTIWGLETGQVLGRVN LVSGHVKTQLIAHDKVEYDI AFSRAGGGGRDMFASVGADGS VRMFDLRHLEHSTIYEDPQ HHPLLRLCWNKQDPNYLAT



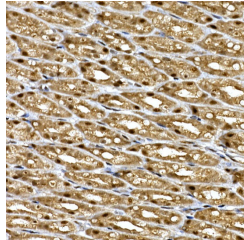
Western blot analysis of extracts of various cell lines, using DCAF7 antibody (STJ28870) at 1:1000 dilution. Secondary antibody: HRP Goat Anti-rabbit IgG (H+L) (STJ5000856) at 1:10000 dilution. Lysates/proteins: 25 µg per lane. Blocking buffer: 3% non-fat dry milk in TBST. Detection: ECL Basic kit. Exposure time: 10s.



Immunohistochemistry analysis of paraffin-embedded human lung cancer using DCAF7 rabbit polyclonal antibody (STJ28870) at dilution of 1:100 (40x lens). Perform high pressure antigen retrieval with 10 mM citrate buffer pH 6.0 before commencing with immunohistochemistry staining protocol.



Immunohistochemistry analysis of paraffin-embedded mouse stomach using DCAF7 rabbit polyclonal antibody (STJ28870) at dilution of 1:100 (40x lens). Perform high pressure antigen retrieval with 10 mM citrate buffer pH 6.0 before commencing with immunohistochemistry staining protocol.



Immunohistochemistry analysis of paraffin-embedded rat stomach using DCAF7 rabbit polyclonal antibody (STJ28870) at dilution of 1:100 (40x lens). Perform high pressure antigen retrieval with 10 mM citrate buffer pH 6.0 before commencing with immunohistochemistry staining protocol.

This product is suitable for in-vitro studies under the RESEARCH USE ONLY [RUO] licence. This product must not be used as for diagnostic or other medical purposes.
St John's Laboratory Ltd, Knowledge Dock Business Centre, University Way, London, E16 2RD | Tel: 0208 223 3081