

Anti-TXN2 antibody (1-166) (STJ28865)
STJ28865

GENERAL INFORMATION

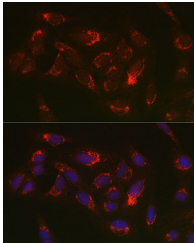
Product Type	Primary antibodies
Short Description	
Applications	WB/IF/ICC/ELISA
Host/Source	Rabbit
Reactivity	Human/Mouse

PRODUCT PROPERTIES

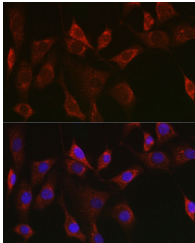
Clonality	Polyclonal
Clone ID	
Concentration	Lot specific
Conjugation	Unconjugated
Purification	Affinity purification
Dilution	WB:1:500-1:2000
Range	IF/CC:1:50-1:200
	ELISA:Recommended starting concentration is 1 μ g/mL. Please optimize the concentration based on your specific assay requirements.
Formulation	PBS with 0.02% Sodium Azide, 50% Glycerol, pH 7.3.
Isotype	IgG
Storage Instruction	Store at -20°C for up to 1 year from the date of receipt, and avoid repeat freeze-thaw cycles.

TARGET INFORMATION

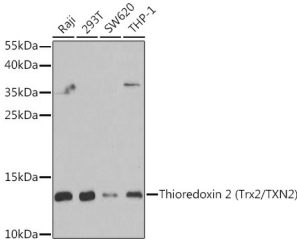
Gene ID	25828
Gene Symbol	TXN2
Uniprot ID	THIOM_HUMAN
Immunogen	
Immunogen Region	1-166
Specificity	Recombinant fusion protein containing a sequence corresponding to amino acids 1-166 of human Thioredoxin 2 (Trx2/Thioredoxin 2 (Trx2/TXN2)) (NP_036605.2).
Immunogen Sequence	MAQRLLLRFLASVISRKPS QGQWPPLTSRALQTPQCSPG GLTVTPNPARTIYTTRISLT TFNIQDGPDPQDRVVNSETP VVWDFHAQWCGPCKILGPRL EKMVAQHGKVMMAKVDIDD HTDLAIEYEVSAVPTVLAMK NGDWVDKFGIKDEDEQLEAF LKKLIG



Immunofluorescence analysis of U2OS cells using Thioredoxin 2 (Trx2/TXN2) Rabbit polyclonal antibody (STJ28865) at dilution of 1:100 (40x lens). Blue: DAPI for nuclear staining.



Immunofluorescence analysis of NIH/3T3 cells using Thioredoxin 2 (Trx2/TXN2) Rabbit polyclonal antibody (STJ28865) at dilution of 1:100 (40x lens). Blue: DAPI for nuclear staining.



Western blot analysis of extracts of various cell lines, using Thioredoxin 2 (Trx2/Thioredoxin 2 (Trx2/TXN2)) antibody (STJ28865) at 1:1000 dilution. Secondary antibody: HRP Goat Anti-Rabbit IgG (H+L) (STJS000856) at 1:10000 dilution. Lysates/proteins: 25 μ g per lane. Blocking buffer: 3% nonfat dry milk in TBST. Detection: ECL Basic Kit. Exposure time: 30s.

This product is suitable for in-vitro studies under the RESEARCH USE ONLY [RUO] licence. This product must not be used as for diagnostic or other medical purposes.
St John's Laboratory Ltd, Knowledge Dock Business Centre, University Way, London, E16 2RD | Tel: 0208 223 3081