

Anti-TAT antibody (1-270) (STJ28847)
STJ28847

GENERAL INFORMATION

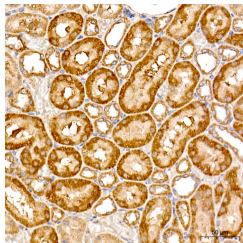
Product Type	Primary antibodies
Short Description	
Applications	WB/IHC-P/ELISA
Host/Source	Rabbit
Reactivity	Human/Mouse/Rat

PRODUCT PROPERTIES

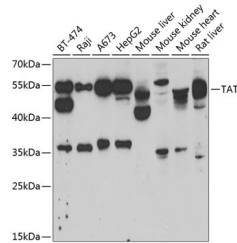
Clonality	Polyclonal
Clone ID	
Concentration	Lot specific
Conjugation	Unconjugated
Purification	Affinity purification
Dilution	WB:1:500-1:2000
Range	IHC-P:1:500-1:1000 ELISA:Recommended starting concentration is 1 µg/mL. Please optimize the concentration based on your specific assay requirements.
Formulation	PBS with 0.02% Sodium Azide, 50% Glycerol, pH 7.3.
Isotype	IgG
Storage Instruction	Store at -20°C for up to 1 year from the date of receipt, and avoid repeat freeze-thaw cycles.

TARGET INFORMATION

Gene ID	6898
Gene Symbol	TAT
Uniprot ID	ATTY_HUMAN
Immunogen	
Immunogen Region	1-270
Specificity	Recombinant fusion protein containing a sequence corresponding to amino acids 1-270 of human TAT (NP_000344.1).
Immunogen Sequence	MDPYMIQMSSKGNLPSILDV HVNVGGRSSVPGMKMKGRKAR WSVRPSDMAKKTFFNPIRAIV DNMKVKNPNKTMISLSIGD PTVFGNLPTDPEVTQAMKDA LDSGKYNGYAPSIGFLSSRE EIASYYHCPEAPLEAKDVIL TSGCSQAIDLCLAVLANPGQ NILVPRPGFSLYKTLAESMG IEVKLYNLLPEKSWEIDLKQ LEYLIDEKTACLIVNNPSNP CGSVFSKRHLQKILAVAAAR



Immunohistochemistry analysis of TAT in paraffin-embedded rat kidney tissue using TAT Rabbit polyclonal antibody (STJ28847) at a dilution of 1:500 (40x lens). High pressure antigen retrieval was performed with 0.01 M citrate buffer (pH 6.0) prior to immunohistochemistry staining.



Western blot analysis of various lysates using TAT Rabbit polyclonal antibody (STJ28847) at 1:1000 dilution. Secondary antibody: HRP Goat Anti-Rabbit IgG (H+L) (STJ5000856) at 1:10000 dilution. Lysates/proteins: 25 µg per lane. Blocking buffer: 3% nonfat dry milk in TBST. Detection: ECL Basic Kit. Exposure time: 5min.

This product is suitable for in-vitro studies under the RESEARCH USE ONLY [RUO] licence. This product must not be used as for diagnostic or other medical purposes.
St John's Laboratory Ltd, Knowledge Dock Business Centre, University Way, London, E16 2RD | Tel: 0208 223 3081