

Anti-SPHK2 antibody (1-165) (STJ28831)

STJ28831

GENERAL INFORMATION

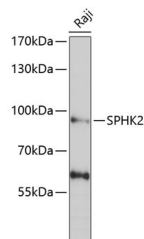
Product Type	Primary antibodies
Short Description	
Applications	WB/ELISA
Host/Source	Rabbit
Reactivity	Human/Mouse/Rat

PRODUCT PROPERTIES

Clonality	Polyclonal
Clone ID	
Concentration	Lot specific
Conjugation	Unconjugated
Purification	Affinity purification
Dilution	WB: 1:500-1:2000
Range	ELISA: Recommended starting concentration is 1 µg/mL. Please optimize the concentration based on your specific assay requirements.
Formulation	PBS with 0.02% Sodium Azide, 50% Glycerol, pH 7.3.
Isotype	IgG
Storage	Store at -20°C for up to 1 year from the date of receipt, and avoid repeat freeze-thaw cycles.
Instruction	

TARGET INFORMATION

Gene ID	56848
Gene Symbol	SPHK2
Uniprot ID	SPHK2_HUMAN
Immunogen	
Immunogen Region	1-165
Specificity	Recombinant fusion protein containing a sequence corresponding to amino acids 1-165 of human SPHK2 (NP_001191088.1). MNGHLEAEEQQDQRPDQELT GSWGHGPRSTLVRAKAMAPP PPPLAASTPLLHGEFGSYPARGPRFALTLSQALHIQRLR
Immunogen Sequence	PKPEARPRGGLVPLAEVSGC CTLRSRSPSDSAAYFCIYTY PRGRRGARRRATRTFRADGA ATYEENRAEAQRWATALTCL LRGLP



Western blot analysis of extracts of Raji cells, using SPHK2 antibody (STJ28831) at 1:1000 dilution. Secondary antibody: HRP Goat Anti-Rabbit IgG (H+L) (STJ5000856) at 1:10000 dilution. Lysates/proteins: 25 µg per lane. Blocking buffer: 3% nonfat dry milk in TBST. Detection: ECL Basic Kit. Exposure time: 90s.

This product is suitable for in-vitro studies under the RESEARCH USE ONLY [RUO] licence. This product must not be used as for diagnostic or other medical purposes.
St John's Laboratory Ltd, Knowledge Dock Business Centre, University Way, London, E16 2RD | Tel: 0208 223 3081