

Anti-RECK antibody (110-210) (STJ28801)

STJ28801

GENERAL INFORMATION

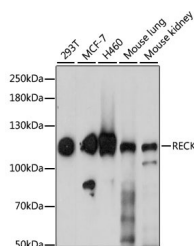
Product Type	Primary antibodies
Short Description	
Applications	WB/ELISA
Host/Source	Rabbit
Reactivity	Human/Mouse

PRODUCT PROPERTIES

Clonality	Polyclonal
Clone ID	
Concentration	Lot specific
Conjugation	Unconjugated
Purification	Affinity purification
Dilution Range	WB:1:500-1:2000 ELISA:Recommended starting concentration is 1 Mu g/mL. Please optimize the concentration based on your specific assay requirements.
Formulation	PBS with 0.09% Sodium Azide, 50% Glycerol, pH 7.3.
Isotype	IgG
Storage	Store at -20°C for up to 1 year from the date of receipt, and avoid repeat freeze-thaw cycles.
Instruction	

TARGET INFORMATION

Gene ID	8434
Gene Symbol	RECK
Uniprot ID	RECK_HUMAN
Immunogen	
Immunogen Region	110-210
Specificity	Recombinant fusion protein containing a sequence corresponding to amino acids 110-210 of human RECK (NP_066934.1).
Immunogen Sequence	ALECRQACKQASSKNDISKV CRKEYENALFSCISRNEMGS VCCSYAGHHTNCREYCQAIF RTDSSPGPSQIKAVENYCAS ISPQLIHCVNNTQSYPMRN P



Western blot analysis of extracts of various cell lines, using RECK antibody (STJ28801) at 1:1000 dilution. Secondary antibody: HRP Goat Anti-Rabbit IgG (H+L) (STJS000856) at 1:10000 dilution. Lysates/proteins: 25 Mu g per lane. Blocking buffer: 3% nonfat dry milk in TBST. Detection: ECL Enhanced Kit. Exposure time: 60s.