

Anti-PPP2CA antibody (1-309) (STJ28785)
STJ28785

GENERAL INFORMATION

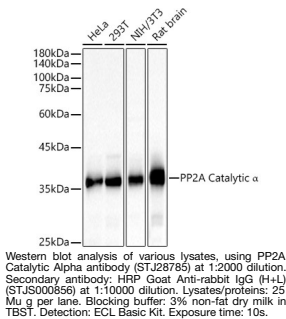
Product Type	Primary antibodies
Short Description	
Applications	WB/IHC-P/IF/ICC/IP/ELISA
Host/Source	Rabbit
Reactivity	Human/Mouse/Rat

PRODUCT PROPERTIES

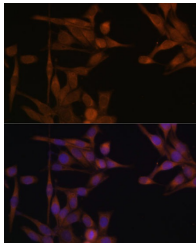
Clonality	Polyclonal
Clone ID	
Concentration	Lot specific
Conjugation	Unconjugated
Purification	Affinity purification
Dilution Range	WB:1:1000-1:5000 IHC-P:1:50-1:200 IF/ICC:1:50-1:200
	IP:0.5 Mu g-4 Mu g antibody for 200 Mu g-500 Mu g extracts of whole cells
	ELISA:Recommended starting concentration is 1 Mu g/mL. Please optimize the concentration based on your speci
Formulation	PBS with 0.02% Sodium Azide, 50% Glycerol, pH 7.3.
Isotype	IgG
Storage Instruction	Store at-20°C for up to 1 year from the date of receipt, and avoid repeat freeze-thaw cycles.

TARGET INFORMATION

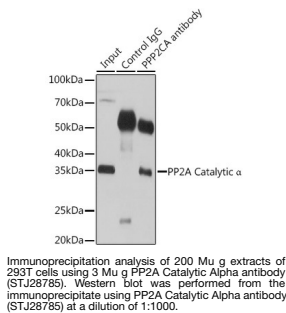
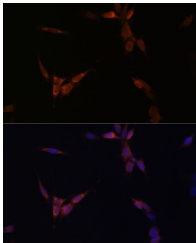
Gene ID	5515
Gene Symbol	PPP2CA
Uniprot ID	P22AA_HUMAN
Immunogen	
Immunogen Region	1-309
Specificity	Recombinant fusion protein containing a sequence corresponding to amino acids 1-309 of human PP2A Catalytic Alpha (NP_002706.1).
Immunogen Sequence	MDEKVFTELDQWIEQLNEC KQLSESQVKSCEKAKEILT KESNVQEVRCPTVTCGDVHG QFHDLMELFRIGGKSPDTNY LFMGDYVDRGYYSVETVLL VALKVRYRERITILRGNHES RQITQVYGFYDECLRKYGNA NVWKYFTDLFDYLPALTALVD GQIFCLHGGSLPSIDTL DHI RALDRLQEVPHGPMCDLLW SDPDDRGWGISPRGAGYTF GQDISETFNHANGLTLVSR



Immunofluorescence analysis of HeLa cells using PP2A Catalytic Alpha antibody (STJ28785) at dilution of 1:100. Blue: DAPI for nuclear staining.



Immunofluorescence analysis of NIH/3T3 cells using PP2A Catalytic Alpha antibody (STJ28785) at dilution of 1:100. Blue: DAPI for nuclear staining.



This product is suitable for in-vitro studies under the RESEARCH USE ONLY [RUO] licence. This product must not be used as for diagnostic or other medical purposes.
St John's Laboratory Ltd, Knowledge Dock Business Centre, University Way, London, E16 2RD | Tel: 0208 223 3081