

Anti-PPM1A antibody (161-370) (STJ28782)
STJ28782

GENERAL INFORMATION

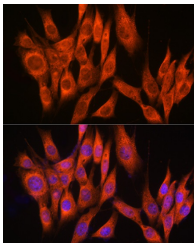
Product Type	Primary antibodies
Short Description	
Applications	WB/IF/ICC/ELISA
Host/Source	Rabbit
Reactivity	Human/Mouse/Rat

PRODUCT PROPERTIES

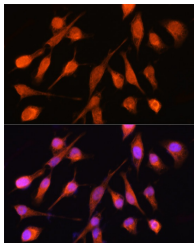
Clonality	Polyclonal
Clone ID	
Concentration	Lot specific
Conjugation	Unconjugated
Purification	Affinity purification
Dilution Range	WB:1:500-1:2000 IF/CC:1:50-1:200 ELISA:Recommended starting concentration is 1 Mu g/mL. Please optimize the concentration based on your specific assay requirements.
Formulation	PBS with 0.02% Sodium Azide, 50% Glycerol, pH 7.3.
Isotype	IgG
Storage Instruction	Store at -20°C for up to 1 year from the date of receipt, and avoid repeat freeze-thaw cycles.

TARGET INFORMATION

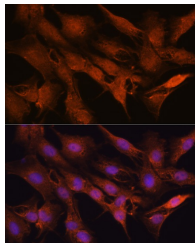
Gene ID	5494
Gene Symbol	PPM1A
Uniprot ID	PPM1A_HUMAN
Immunogen Region	161-370
Specificity	Recombinant fusion protein containing a sequence corresponding to amino acids 161-370 of human PPM1A (NP_005029.1).
Immunogen Sequence	ILENVEVKGEKPAKLCVIAE CGELKEGDDGGIFPKDGS GD SHPDFPEDADIDLKDVKIL LITEDLKNIGNTFFKSNQWE MAIKKYAEVLRVVDSSKAVI ETADRAKLQPIALSCVLNIG ACKLKMSNWQGAIDSCLEAL ELDPSNTKALYRRAQGWQGL KEYDQALADLKKAQGIAPED KAIQAELLKVKQKIKAQKDK EKAVYAKMFA



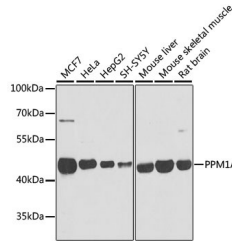
Immunofluorescence analysis of NIH-3T3 cells using PPM1A Rabbit polyclonal antibody (STJ28782) at dilution of 1:100 (40x lens). Blue: DAPI for nuclear staining.



Immunofluorescence analysis of HeLa cells using PPM1A Rabbit polyclonal antibody (STJ28782) at dilution of 1:100 (40x lens). Blue: DAPI for nuclear staining.



Immunofluorescence analysis of C6 cells using PPM1A Rabbit polyclonal antibody (STJ28782) at dilution of 1:100 (40x lens). Blue: DAPI for nuclear staining.



Western blot analysis of extracts of various cell lines, using PPM1A antibody (STJ28782) at 1:1000 dilution. Secondary antibody: HRP Goat Anti-Rabbit IgG (H+L) (STJ5000856) at 1:10000 dilution. Lysates/proteins: 25 Mu g per lane. Blocking buffer: 3% nonfat dry milk in TBST. Detection: ECL Basic Kit. Exposure time: 1s.

This product is suitable for in-vitro studies under the RESEARCH USE ONLY [RUO] licence. This product must not be used as for diagnostic or other medical purposes.
St John's Laboratory Ltd, Knowledge Dock Business Centre, University Way, London, E16 2RD | Tel: 0208 223 3081