

Anti-PDLIM1 antibody (1-329) (STJ28769)
STJ28769

GENERAL INFORMATION

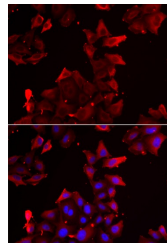
Product Type	Primary antibodies
Short Description	
Applications	WB/IF/ICC/ELISA
Host/Source	Rabbit
Reactivity	Human/Mouse/Rat

PRODUCT PROPERTIES

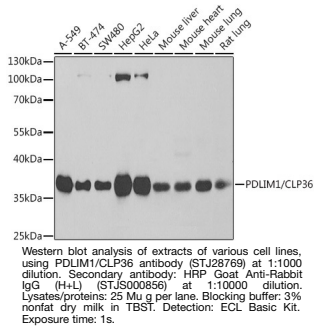
Clonality	Polyclonal
Clone ID	
Concentration	Lot specific
Conjugation	Unconjugated
Purification	Affinity purification
Dilution	WB:1:500-1:2000
Range	IF/CC:1:10-1:100 ELISA:Recommended starting concentration is 1 Mu g/mL. Please optimize the concentration based on your specific assay requirements.
Formulation	PBS with 0.02% Sodium Azide, 50% Glycerol, pH 7.3.
Isotype	IgG
Storage Instruction	Store at -20°C for up to 1 year from the date of receipt, and avoid repeat freeze-thaw cycles.

TARGET INFORMATION

Gene ID	9124
Gene Symbol	PDLIM1
Uniprot ID	PDLI1_HUMAN
Immunogen	
Immunogen Region	1-329
Specificity	Recombinant fusion protein containing a sequence corresponding to amino acids 1-329 of human PDLIM1/CLP36 (NP_066272.1).
Immunogen Sequence	MTTQQIDLQGGPGWGFRLVG GKDFEQPLAISRVTPGSKAA LANLCIGDVITAIDGENTSN MTHLEAQNRIKGCTDNLTLT VARSEHKVWSPLVTEEGKRH PYKMNLASEPQEVLIHIGSAH NRSAMPFTASPASSTTARVI TNQYNNPAGLYSSENISNFN NALESKTAASGVEANSRPLD HAQPPSSLVIDKESEVYKML QEQELNEPPKQSTSFLVLQ EILESEEKGDPNKPSGFRS



Immunofluorescence analysis of U2OS cells using PDLIM1/CLP36 antibody (STJ28769). Blue: DAPI for nuclear staining.



This product is suitable for in-vitro studies under the RESEARCH USE ONLY [RUO] licence. This product must not be used as for diagnostic or other medical purposes.
St John's Laboratory Ltd, Knowledge Dock Business Centre, University Way, London, E16 2RD | Tel: 0208 223 3081