

Anti-MYL3 antibody (1-195) (STJ28745)

STJ28745

GENERAL INFORMATION

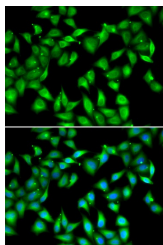
Product Type	Primary antibodies
Short Description	
Applications	WB/IF/ICC/ELISA
Host/Source	Rabbit
Reactivity	Human/Mouse/Rat

PRODUCT PROPERTIES

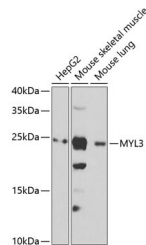
Clonality	Polyclonal
Clone ID	
Concentration	Lot specific
Conjugation	Unconjugated
Purification	Affinity purification
Dilution	WB:1:500-1:2000
Range	IF/CC:1:50-1:200
	ELISA:Recommended starting concentration is 1 Mu g/mL. Please optimize the concentration based on your specific assay requirements.
Formulation	PBS with 0.02% Sodium Azide, 50% Glycerol, pH 7.3.
Isotype	IgG
Storage Instruction	Store at -20°C for up to 1 year from the date of receipt, and avoid repeat freeze-thaw cycles.

TARGET INFORMATION

Gene ID	4634
Gene Symbol	MYL3
Uniprot ID	MYL3_HUMAN
Immunogen	
Immunogen Region	1-195
Specificity	Recombinant fusion protein containing a sequence corresponding to amino acids 1-195 of human MYL3 (NP_000249.1).
Immunogen Sequence	MAPKKPEPKDDAKAAPKAA PAPAPPPPEPERPKEVEFDAS KIKIEFTPEQIEEFKEAFML FDRTPKCEMKITYGQCGDVL RALGQNPTQAEVLRVLGKPR QEELNTKMMDFETFLPMLQH ISKNKDTGTIEDFVEGLRVF DKEGNGTVMGAELRHVLATL GERLTEDEVEKLMAGQEDSN GCINYEAFVKHIMSS



Immunofluorescence analysis of U2OS cells using MYL3 antibody (STJ28745). Blue: DAPI for nuclear staining.



Western blot analysis of extracts of various cell lines, using MYL3 antibody (STJ28745) at 1:1000 dilution. Secondary antibody: HRP Goat Anti-Rabbit IgG (H+L) (STJ3000896) at 1:10000 dilution. Lysates/proteins: 25 Mu g per lane. Blocking buffer: 3% nonfat dry milk in TBST. Detection: ECL Basic Kit. Exposure time: 15s.

This product is suitable for in-vitro studies under the RESEARCH USE ONLY [RUO] licence. This product must not be used as for diagnostic or other medical purposes.
St John's Laboratory Ltd, Knowledge Dock Business Centre, University Way, London, E16 2RD | Tel: 0208 223 3081