

Anti-MMRN1 antibody (1083-1228) (STJ28741)

STJ28741

GENERAL INFORMATION

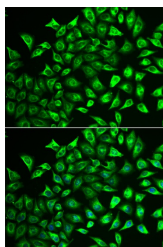
Product Type	Primary antibodies
Short Description	
Applications	WB/IF/ICC/ELISA
Host/Source	Rabbit
Reactivity	Human/Mouse

PRODUCT PROPERTIES

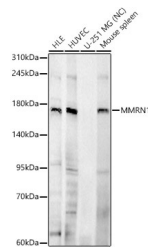
Clonality	Polyclonal
Clone ID	
Concentration	Lot specific
Conjugation	Unconjugated
Purification	Affinity purification
Dilution	WB:1:500-1:2000
Range	IF/CC:1:50-1:100
	ELISA:Recommended starting concentration is 1 Mu g/mL. Please optimize the concentration based on your specific assay requirements.
Formulation	PBS with 0.05% Proclin300, 50% Glycerol, pH 7.3.
Isotype	IgG
Storage Instruction	Store at -20°C for up to 1 year from the date of receipt, and avoid repeat freeze-thaw cycles.

TARGET INFORMATION

Gene ID	22915
Gene Symbol	MMRN1
Uniprot ID	MMRN1_HUMAN
Immunogen	
Immunogen Region	1083-1228
Specificity	Recombinant fusion protein containing a sequence corresponding to amino acids 1083-1228 of human MMRN1 (NP_031377.2).
Immunogen Sequence	ENALAPDFSKGSYRYAPMVA FFASHTYGMTIPGILFNNL DVNYGASYTPRTGKFRIPYL GVYVFKYTIESFAHISGFL VVDGIDKLAFESINSEIH CDRVLTGDALLELNYGQEVW LRLAKGTIPAKFPVTTFSG YLLYRT



Immunofluorescence analysis of U2OS cells using MMRN1 antibody (STJ28741). Blue: DAPI for nuclear staining.



Western blot analysis of various lysates, using MMRN1 Rabbit polyclonal antibody (STJ28741) at 1:1000 dilution. Secondary antibody: HRP Goat Anti-Rabbit IgG (H+L) (STJS000856) at 1:10000 dilution. Lysates/proteins: 25ug per lane. Blocking buffer: 3% nonfat dry milk in TBST. Detection: ECL Basic Kit. Negative control (NC) -U-251 MGExposure time: 180s.