

Anti-GLP2R antibody (460-553) (STJ28685)

STJ28685

GENERAL INFORMATION

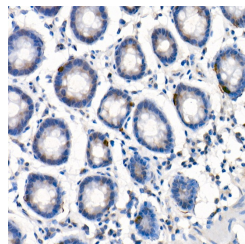
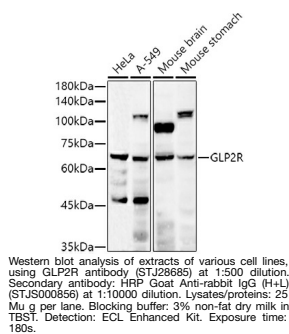
Product Type	Primary antibodies
Short Description	
Applications	WB/IHC-P/ELISA
Host/Source	Rabbit
Reactivity	Human/Mouse

PRODUCT PROPERTIES

Clonality	Polyclonal
Clone ID	
Concentration	Lot specific
Conjugation	Unconjugated
Purification	Affinity purification
Dilution Range	WB:1:100-1:500 IHC-P:1:50-1:200 ELISA:Recommended starting concentration is 1 Mu g/mL. Please optimize the concentration based on your specific assay requirements.
Formulation	PBS with 0.05% Proclin300, 50% Glycerol, pH 7.3.
Isotype	IgG
Storage Instruction	Store at -20°C for up to 1 year from the date of receipt, and avoid repeat freeze-thaw cycles.

TARGET INFORMATION

Gene ID	9340
Gene Symbol	GLP2R
Uniprot ID	GLP2R_HUMAN
Immunogen	
Immunogen Region	460-553
Specificity	Recombinant fusion protein containing a sequence corresponding to amino acids 460-553 of human GLP2R (NP_004237.1).
Immunogen Sequence	SGCRACVLGKDFRFLGKCPK KLSEGDGAELRLQPSLNS GRLLHLAMRGLGELGAQPQQ DHARWPRGSSLSECSEGDVT MANTMEEILEESEI



This product is suitable for in-vitro studies under the RESEARCH USE ONLY [RUO] licence. This product must not be used as for diagnostic or other medical purposes.
St John's Laboratory Ltd, Knowledge Dock Business Centre, University Way, London, E16 2RD | Tel: 0208 223 3081