

Anti-FGF19 antibody (25-216) (STJ28672)

STJ28672

GENERAL INFORMATION

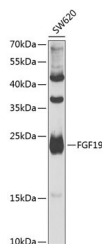
Product Type	Primary antibodies
Short Description	
Applications	WB/ELISA
Host/Source	Rabbit
Reactivity	Human/Mouse/Rat

PRODUCT PROPERTIES

Clonality	Polyclonal
Clone ID	
Concentration	Lot specific
Conjugation	Unconjugated
Purification	Affinity purification
Dilution	WB:1:100-1:500
Range	ELISA:Recommended starting concentration is 1 Mu g/mL. Please optimize the concentration based on your specific assay requirements.
Formulation	PBS with 0.05% Proclin300, 50% Glycerol, pH 7.3.
Isotype	IgG
Storage	Store at-20°C for up to 1 year from the date of receipt, and avoid repeat freeze-thaw cycles.
Instruction	

TARGET INFORMATION

Gene ID	9965
Gene Symbol	FGF19
Uniprot ID	FGF19_HUMAN
Immunogen	
Immunogen Region	25-216
Specificity	Recombinant fusion protein containing a sequence corresponding to amino acids 25-216 of human FGF19 (NP_005108.1).
Immunogen Sequence	LAFSDAGPHVHYGWGDPRL RHLYTSGPHGLSSCFLRIRA DGVVDCARGQSAHSLLEIKA VALRTVAIKGVHSVRYLCMG ADGKMQGLLQYSEEDCAFE EIRPDGYNVYRSEKHLRPLVS LSSAKQRQLYKNRGFLPLSH FLPMLPMVPEEPEDLRGHLE SDMFSSPLETDSMDPFGLVT GLEAVRSPSFEK



Western blot analysis of extracts of SW620 cells, using FGF19 antibody (STJ28672) at 1:1000 dilution. Secondary antibody: HRP Goat Anti-rabbit IgG (H+L) at 1:10000 dilution. Lysates/proteins: 25ug per lane. Blocking buffer: 3% nonfat dry milk in TBST. Detection: ECL Basic Kit. Exposure time: 30s.

This product is suitable for in-vitro studies under the RESEARCH USE ONLY [RUO] licence. This product must not be used as for diagnostic or other medical purposes.
St John's Laboratory Ltd, Knowledge Dock Business Centre, University Way, London, E16 2RD | Tel: 0208 223 3081