

Anti-CYP4V2 antibody (206-525) (STJ28656)

STJ28656

GENERAL INFORMATION

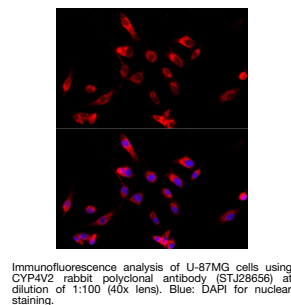
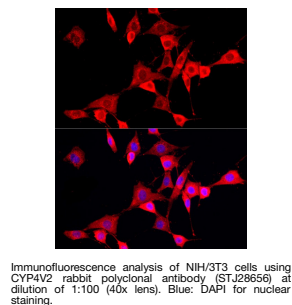
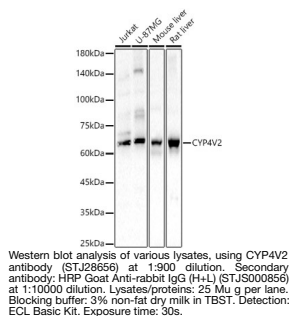
Product Type	Primary antibodies
Short Description	
Applications	WB/IF/ICC/ELISA
Host/Source	Rabbit
Reactivity	Human/Mouse/Rat

PRODUCT PROPERTIES

Clonality	Polyclonal
Clone ID	
Concentration	Lot specific
Conjugation	Unconjugated
Purification	Affinity purification
Dilution	WB:1:500-1:1000
Range	IF/CC:1:50-1:200
	ELISA:Recommended starting concentration is 1 μ g/mL. Please optimize the concentration based on your specific assay requirements.
Formulation	PBS with 0.02% Sodium Azide, 50% Glycerol, pH 7.3.
Isotype	IgG
Storage Instruction	Store at -20°C for up to 1 year from the date of receipt, and avoid repeat freeze-thaw cycles.

TARGET INFORMATION

Gene ID	285440
Gene Symbol	CYP4V2
Uniprot ID	CP4V2_HUMAN
Immunogen	
Immunogen Region	206-525
Specificity	A synthetic peptide corresponding to a sequence within amino acids 200-300 of human CYP4V2 (NP_997235.3).
Immunogen Sequence	ICETAMGKNIGAGSNDSEY VRAVYRMSEMFRIKMPWL WLDLWYLMFKEGWEHKKSLQ ILHTFTNSVIAERANEMNAN EDCRGDGRGSAPSKNKRRF LDLLSVTDDEGNRLSHEDI REEVDTFMFEGHDTAAAIN WSLYLLGSNPEVQKKVDHEL DDVFGKSDRPATVEDLKKLR YLECVIKETLRLFPSVPLFA RVSSEDCEVAGYRVLKGTEA VIIPYALHRDPYFPNPEE



This product is suitable for in-vitro studies under the RESEARCH USE ONLY [RUO] licence. This product must not be used as for diagnostic or other medical purposes.
St John's Laboratory Ltd, Knowledge Dock Business Centre, University Way, London, E16 2RD | Tel: 0208 223 3081