

Anti-CRHBP antibody (25-322) (STJ28651)
STJ28651

GENERAL INFORMATION

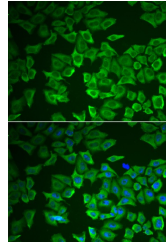
Product Type	Primary antibodies
Short Description	
Applications	WB/IHC-P/IF/ICC/ELISA
Host/Source	Rabbit
Reactivity	Human/Mouse/Rat

PRODUCT PROPERTIES

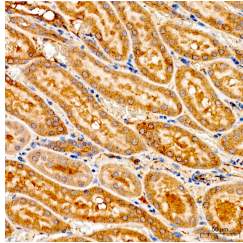
Clonality	Polyclonal
Clone ID	
Concentration	Lot specific
Conjugation	Unconjugated
Purification	Affinity purification
Dilution	WB:1:1000-1:5000
Range	IHC-P:1:100-1:500 IF/ICC:1:50-1:100 ELISA:Recommended starting concentration is 1 μ g/mL. Please optimize the concentration based on your specific assay requirements.
Formulation	PBS with 0.02% Sodium Azide, 50% Glycerol, pH 7.3.
Isotype	IgG
Storage	Store at -20°C for up to 1 year from the date of receipt, and avoid repeat freeze-thaw cycles.
Instruction	

TARGET INFORMATION

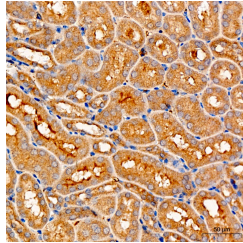
Gene ID	1393
Gene Symbol	CRHBP
Uniprot ID	CRHBP_HUMAN
Immunogen	
Immunogen Region	25-322
Specificity	Recombinant fusion protein containing a sequence corresponding to amino acids 25-322 of human CRHBP (NP_001873.2).
Immunogen Sequence	YLELREAADYDPFLFSANL KRELAGEQPYRRALRCLDML SLQGQFTTADRPQLHCAAF FISEPEEFITHYDQVSIDC QGGDFLKVFDGWILKGEKFP SSQDHPLPSAERYIDFCESG LSRRSIRSSQNVAMIFFRVH EPGNGFTLTIKTDPNLFPCN VISQTPNGKFTLVVPHQHRN CSFSIYPVVIKISDLTLGH VNLGLQKKSSAGCEGIGDFV ELLGGTGLDPSKMTPLADL



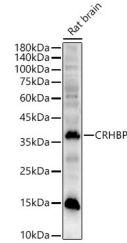
Immunofluorescence analysis of HeLa cells using CRHBP antibody (STJ28651). Blue: DAPI for nuclear staining.



Immunohistochemistry analysis of CRHBP in paraffin-embedded rat kidney tissue using CRHBP Rabbit polyclonal antibody (STJ28651) at a dilution of 1:300 (40x lens). High pressure antigen retrieval was performed with 0.01 M citrate buffer (pH 6.0) prior to immunohistochemistry staining.



Immunohistochemistry analysis of CRHBP in paraffin-embedded mouse kidney tissue using CRHBP Rabbit polyclonal antibody (STJ28651) at a dilution of 1:300 (40x lens). High pressure antigen retrieval was performed with 0.01 M citrate buffer (pH 6.0) prior to immunohistochemistry staining.



Western blot analysis of Rat brain using CRHBP Rabbit polyclonal antibody (STJ28651) at 1:2000 dilution. Secondary antibody: HRP Goat Anti-Rabbit IgG (H+L) (STJS000856) at 1:10000 dilution. Lysates/proteins: 25 μ g per lane. Blocking buffer: 3% nonfat dry milk in TBST. Detection: ECL Enhanced Kit. Exposure time: 60s.

This product is suitable for in-vitro studies under the RESEARCH USE ONLY [RUO] licence. This product must not be used as for diagnostic or other medical purposes.
St John's Laboratory Ltd, Knowledge Dock Business Centre, University Way, London, E16 2RD | Tel: 0208 223 3081