

Anti-GRK1 antibody (1-160) (STJ28580)

STJ28580

GENERAL INFORMATION

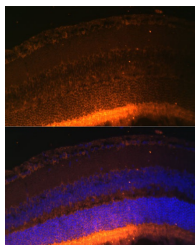
Product Type	Primary antibodies
Short Description	
Applications	WB/IHC-P/IF/ICC/ELISA
Host/Source	Rabbit
Reactivity	Human/Mouse/Rat

PRODUCT PROPERTIES

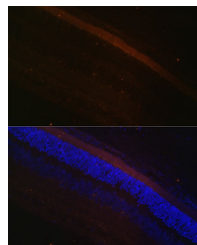
Clonality	Polyclonal
Clone ID	
Concentration	Lot specific
Conjugation	Unconjugated
Purification	Affinity purification
Dilution	WB:1:200-1:2000
Range	IHC-P:1:50-1:200 IF/ICC:1:50-1:200 ELISA:Recommended starting concentration is 1 μ g/mL. Please optimize the concentration based on your specific assay requirements.
Formulation	PBS with 0.02% Sodium Azide, 50% Glycerol, pH 7.3.
Isotype	IgG
Storage	Store at -20°C for up to 1 year from the date of receipt, and avoid repeat freeze-thaw cycles.
Instruction	

TARGET INFORMATION

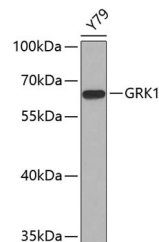
Gene ID	6011
Gene Symbol	GRK1
Uniprot ID	GRK1_HUMAN
Immunogen	
Immunogen Region	1-160
Specificity	Recombinant fusion protein containing a sequence corresponding to amino acids 1-160 of human GRK1 (NP_002920.1).
Immunogen Sequence	MDFGSLETVVANSAFIAARG SFDGSSSQPSRDKKYLAKLK LPPLSKCESLRDLSLEFES VCLEQPIGKKLFQQLQSAE KHLPALELWKDIEDYDTADN DLQPQKAQTILAQYLDPPQAK LFCSFLDEGIVAKFKEGPVE IQDGLFQPLLQATLAHLGQA



Immunofluorescence analysis of mouse retina using GRK1 Polyclonal Antibody (STJ28580) at dilution of 1:100 (40x lens). Blue: DAPI for nuclear staining.



Immunofluorescence analysis of rat retina using GRK1 Polyclonal Antibody (STJ28580) at dilution of 1:100 (40x lens). Blue: DAPI for nuclear staining.



Western blot analysis of extracts of Y79 cells, using GRK1 antibody (STJ28580). Secondary antibody: HRP Goat Anti-Rabbit IgG (H+L) (STJS000856) at 1:10000 dilution. Lysates/proteins: 25 μ g per lane. Blocking buffer: 3% nonfat dry milk in TBST.

This product is suitable for in-vitro studies under the RESEARCH USE ONLY [RUO] licence. This product must not be used as for diagnostic or other medical purposes.
St John's Laboratory Ltd, Knowledge Dock Business Centre, University Way, London, E16 2RD | Tel: 0208 223 3081