

Anti-PIP antibody (29-146) (STJ28477)

STJ28477

GENERAL INFORMATION

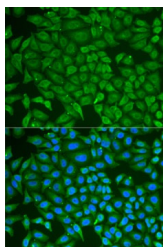
Product Type	Primary antibodies
Short Description	
Applications	IHC-P/IF/ICC/ELISA
Host/Source	Rabbit
Reactivity	Human/Mouse/Rat

PRODUCT PROPERTIES

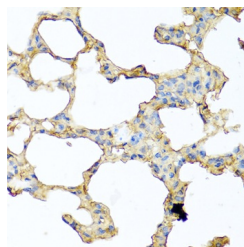
Clonality	Polyclonal
Clone ID	
Concentration	Lot specific
Conjugation	Unconjugated
Purification	Affinity purification
Dilution Range	IHC-P:1:50-1:100 IF/ICC:1:50-1:100 ELISA:Recommended starting concentration is 1 µg/mL. Please optimize the concentration based on your specific assay requirements.
Formulation	PBS with 0.02% Sodium Azide, 50% Glycerol, pH 7.3.
Isotype	IgG
Storage Instruction	Store at -20°C for up to 1 year from the date of receipt, and avoid repeat freeze-thaw cycles.

TARGET INFORMATION

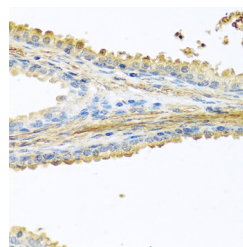
Gene ID	5304
Gene Symbol	PIP
Uniprot ID	PIP_HUMAN
Immunogen	
Immunogen Region	29-146
Specificity	Recombinant fusion protein containing a sequence corresponding to amino acids 29-146 of human PIP (NP_002643.1).
Immunogen Sequence	QDNRKIIKNFDIPKSVRP NDEVTAFLAVQTELKCEMVV KTYLISSIPLQGAFNYKYTA CLCDDNPKTFYWFDFYTNRTV QIAAVVDVIRELGICPDAA VIPIKNNRFYTIELKVE



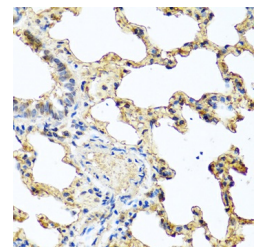
Immunofluorescence analysis of U2OS cells using PIP antibody (STJ28477). Blue: DAPI for nuclear staining.



Immunohistochemistry analysis of paraffin-embedded mouse lung using PIP antibody (STJ28477) at dilution of 1:100 (40x lens). Perform microwave antigen retrieval with 10 mM PBS buffer pH 7.2 before commencing with immunohistochemistry staining protocol.



Immunohistochemistry analysis of paraffin-embedded human prostate using PIP antibody (STJ28477) at dilution of 1:100 (40x lens). Perform microwave antigen retrieval with 10 mM PBS buffer pH 7.2 before commencing with immunohistochemistry staining protocol.



Immunohistochemistry analysis of paraffin-embedded rat lung using PIP antibody (STJ28477) at dilution of 1:100 (40x lens). Perform microwave antigen retrieval with 10 mM PBS buffer pH 7.2 before commencing with immunohistochemistry staining protocol.

This product is suitable for in-vitro studies under the RESEARCH USE ONLY [RUO] licence. This product must not be used as for diagnostic or other medical purposes.
St John's Laboratory Ltd, Knowledge Dock Business Centre, University Way, London, E16 2RD | Tel: 0208 223 3081