

Anti-PCBD1 antibody (1-104) (STJ28475)

STJ28475

GENERAL INFORMATION

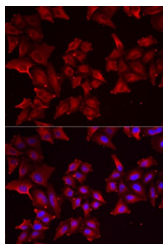
| | |
|--------------------------|--------------------|
| Product Type | Primary antibodies |
| Short Description | |
| Applications | WB/IF/ICC/ELISA |
| Host/Source | Rabbit |
| Reactivity | Human/Mouse/Rat |

PRODUCT PROPERTIES

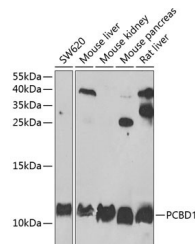
| | |
|-----------------------|---|
| Clonality | Polyclonal |
| Clone ID | |
| Concentration | Lot specific |
| Conjugation | Unconjugated |
| Purification | Affinity purification |
| Dilution Range | WB:1:500-1:2000 IF/ICC:1:10-1:100 ELISA:Recommended starting concentration is 1 µg/mL. Please optimize the concentration based on your specific assay requirements. |
| Formulation | PBS with 0.02% Sodium Azide, 50% Glycerol, pH 7.3. |
| Isotype | IgG |
| Storage | Store at -20°C for up to 1 year from the date of receipt, and avoid repeat freeze-thaw cycles. |
| Instruction | |

TARGET INFORMATION

| | |
|---------------------------|---|
| Gene ID | 5092 |
| Gene Symbol | PCBD1 |
| Uniprot ID | PHS_HUMAN |
| Immunogen | |
| Immunogen Region | 1-104 |
| Specificity | Recombinant fusion protein containing a sequence corresponding to amino acids 1-104 of human PCBD1 (NP_000272.1). |
| Immunogen Sequence | MAGKAHRLSAEERDQLLPNL RAVGWNELEGRDAIFKQHFH KDFNRAFGFMTRVALQAEKL DHHPEWFNVYNKVHITLSTH ECAGLSERDINLASFIEQVA VSMST |



Immunofluorescence analysis of MCF7 cells using PCBD1 antibody (STJ28475). Blue: DAPI for nuclear staining.



Western blot analysis of extracts of various cell lines, using PCBD1 antibody (STJ28475) at 1:1000 dilution. Secondary antibody: HRP Goat Anti-Rabbit IgG (H+L) (STJS000856) at 1:10000 dilution. Lysates/proteins: 25 µg per lane. Blocking buffer: 3% nonfat dry milk in TBST. Detection: ECL Basic Kit. Exposure time: 90s.

This product is suitable for in-vitro studies under the RESEARCH USE ONLY [RUO] licence. This product must not be used as for diagnostic or other medical purposes.
St John's Laboratory Ltd, Knowledge Dock Business Centre, University Way, London, E16 2RD | Tel: 0208 223 3081