

Anti-UCP1 antibody (239-253) (STJ28420)

STJ28420

GENERAL INFORMATION

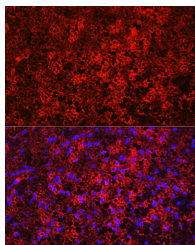
Product Type	Primary antibodies
Short Description	
Applications	WB/IHC-P/IF/ICC/ELISA
Host/Source	Rabbit
Reactivity	Mouse/Rat

PRODUCT PROPERTIES

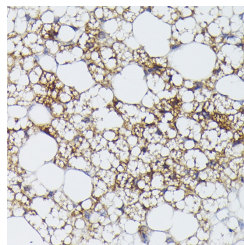
Clonality	Polyclonal
Clone ID	
Concentration	Lot specific
Conjugation	Unconjugated
Purification	Affinity purification
Dilution	WB:1:1000-1:5000
Range	IHC-P:1:50-1:200 IF/ICC:1:50-1:200 ELISA:Recommended starting concentration is 1 µg/mL. Please optimize the concentration based on your specific assay requirements.
Formulation	PBS with 0.09% Sodium Azide, 50% Glycerol, pH 7.3.
Isotype	IgG
Storage	Store at -20°C for up to 1 year from the date of receipt, and avoid repeat freeze-thaw cycles.
Instruction	

TARGET INFORMATION

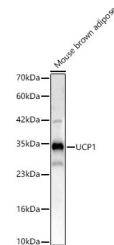
Gene ID	7350
Gene Symbol	UCP1
Uniprot ID	UCP1_HUMAN
Immunogen	
Immunogen Region	239-253
Specificity	A synthetic peptide corresponding to a sequence within amino acids 154-253 of human UCP1 (NP_068605.1).
Immunogen Sequence	YTGTYNAYRIATTEGLTGL WKGTTNLMRSVIINCTELV TYDLMKEAFVKNNILADDVP CHLVSAIAGFCATAMSSPV DVKTRFINSPGQYKSVPN CAMKVFTNEGPTAFFKGLVP SFLRLGSWNVIMFVCFEQLK RELSKSRQTMDCAT



Immunofluorescence analysis of paraffin-embedded rat brown adipose using UCP1 Rabbit polyclonal antibody (STJ28420) at dilution of 1:100 (40x lens). Secondary antibody: Cy3 Goat Anti-Rabbit IgG (H+L) at 1:500 dilution. Blue: DAPI for nuclear staining.



Immunohistochemistry analysis of UCP1 in paraffin-embedded rat brown adipose using UCP1 Rabbit polyclonal antibody (STJ28420) at dilution of 1:50 (40x lens). Perform high pressure antigen retrieval with 10 mM citrate buffer pH 6.0 before commencing with immunohistochemistry staining protocol.



Western blot analysis of lysates from Mouse brown adipose, using UCP1 Rabbit polyclonal antibody (STJ28420) at 1:2000 dilution. Secondary antibody: HRP Goat Anti-Rabbit IgG (H+L) (STJ500856) at 1:10000 dilution. Lysates/proteins: 25µg per lane. Blocking buffer: 3% nonfat dry milk in TBST. Detection: ECL Basic Kit. Exposure time: 180s.

This product is suitable for in-vitro studies under the RESEARCH USE ONLY [RUO] licence. This product must not be used as for diagnostic or other medical purposes.

St John's Laboratory Ltd, Knowledge Dock Business Centre, University Way, London, E16 2RD | Tel: 0208 223 3081