

## Anti-SUV39H2 antibody (141-350) (STJ28418)

STJ28418

### GENERAL INFORMATION

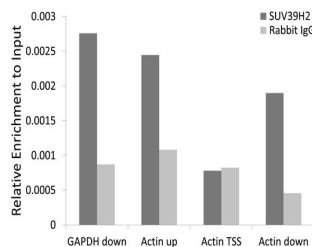
<b>Product Type</b>	Primary antibodies
<b>Short Description</b>	
<b>Applications</b>	WB/ELISA/ChIP
<b>Host/Source</b>	Rabbit
<b>Reactivity</b>	Human/Mouse/Rat

### PRODUCT PROPERTIES

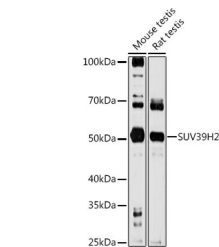
<b>Clonality</b>	Polyclonal
<b>Clone ID</b>	
<b>Concentration</b>	Lot specific
<b>Conjugation</b>	Unconjugated
<b>Purification</b>	Affinity purification
<b>Dilution</b>	WB:1:500-1:1000
<b>Range</b>	ELISA:Recommended starting concentration is 1 Mu g/mL. Please optimize the concentration based on your specific assay requirements. ChIP:5 Mu g antibody for 10 Mu g-15 Mu g of Chromatin
<b>Formulation</b>	PBS with 0.02% Sodium Azide, 50% Glycerol, pH 7.3.
<b>Isotype</b>	IgG
<b>Storage Instruction</b>	Store at -20°C for up to 1 year from the date of receipt, and avoid repeat freeze-thaw cycles.

### TARGET INFORMATION

<b>Gene ID</b>	79723
<b>Gene Symbol</b>	SUV39H2
<b>Uniprot ID</b>	SUV92_HUMAN
<b>Immunogen</b>	
<b>Immunogen Region</b>	141-350
<b>Specificity</b>	Recombinant fusion protein containing a sequence corresponding to amino acids 141-350 of human SUV39H2 (NP_001180354.1).
<b>Immunogen Sequence</b>	CCPAEAGVLLAYNKNQIQI PPGTPIYECNSRCQCGPDCP NRIVQKGTQYSLCIFRTSNG RGWGVKTLVKIKRMSFVMEY VGEVITSEEAERRGQFYDNK GITYLFDLDYESDEFTVDAA RYGNVSHFVNHSCDPNLQVF NVFIDNLDTRLPRIALFSTR TINAGEELTFDYQMKGSGDI SSDSIDHSPAKKRVTVCKC GAVTCRGYLN



Chromatin immunoprecipitation analysis of extracts of 293T cell line, using SUV39H2 antibody (STJ28418) and rabbit IgG. The amount of immunoprecipitated DNA was checked by quantitative PCR. Histogram was constructed by the ratios of the immunoprecipitated DNA to the input.



Western blot analysis of various lysates using SUV39H2 Rabbit polyclonal antibody (STJ28418) at 1:1000 dilution. Secondary antibody: HRP Goat Anti-Rabbit IgG (H+L) (STJ5000656) at 1:10000 dilution. Lysates/proteins: 25 Mu g per lane. Blocking buffer: 3% nonfat dry milk in TBST. Detection: ECL Basic Kit. Exposure time: 90s.

This product is suitable for in-vitro studies under the RESEARCH USE ONLY [RUO] licence. This product must not be used as for diagnostic or other medical purposes.

St John's Laboratory Ltd, Knowledge Dock Business Centre, University Way, London, E16 2RD | Tel: 0208 223 3081