

Anti-PTH antibody (20-115) (STJ28409)

STJ28409

GENERAL INFORMATION

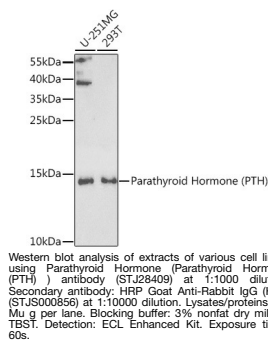
| | |
|--------------------------|--------------------|
| Product Type | Primary antibodies |
| Short Description | |
| Applications | WB/ELISA |
| Host/Source | Rabbit |
| Reactivity | Human/Mouse/Rat |

PRODUCT PROPERTIES

| | |
|-----------------------|--|
| Clonality | Polyclonal |
| Clone ID | |
| Concentration | Lot specific |
| Conjugation | Unconjugated |
| Purification | Affinity purification |
| Dilution Range | WB:1:500-1:2000 ELISA:Recommended starting concentration is 1 Mu g/mL. Please optimize the concentration based on your specific assay requirements. |
| Formulation | PBS with 0.02% Sodium Azide, 50% Glycerol, pH 7.3. |
| Isotype | IgG |
| Storage | Store at -20°C for up to 1 year from the date of receipt, and avoid repeat freeze-thaw cycles. |
| Instruction | |

TARGET INFORMATION

| | |
|---------------------------|---|
| Gene ID | 5741 |
| Gene Symbol | PTH |
| Uniprot ID | PTHY_HUMAN |
| Immunogen | |
| Immunogen Region | 20-115 |
| Specificity | Recombinant fusion protein containing a sequence corresponding to amino acids 20-115 of human Parathyroid Hormone (Parathyroid Hormone (PTH)) (NP_000306.1). |
| Immunogen Sequence | LTKSDGKSVKKRSVSEIQLM HNLGKHLNSMERVEWLRKKL QDVHNFVALGAPLAPRDAGS QRPRKKEDNVLVESHEKSLG EADKADVNVLTAKSQ |



This product is suitable for in-vitro studies under the RESEARCH USE ONLY [RUO] licence. This product must not be used as for diagnostic or other medical purposes.
St John's Laboratory Ltd, Knowledge Dock Business Centre, University Way, London, E16 2RD | Tel: 0208 223 3081