

Anti-MBL2 antibody (21-248) (STJ28388)

STJ28388

GENERAL INFORMATION

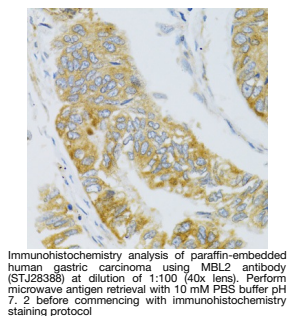
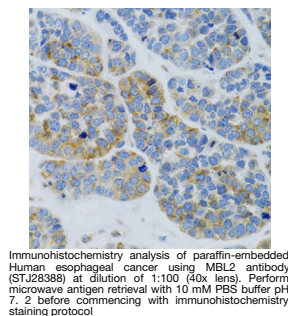
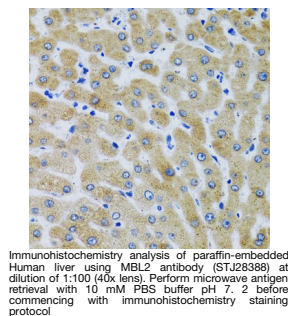
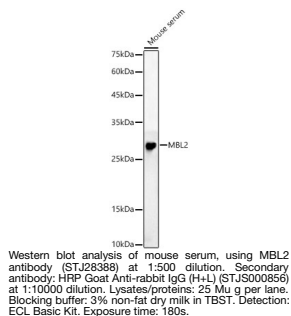
Product Type	Primary antibodies
Short Description	
Applications	WB/IHC-P/ELISA
Host/Source	Rabbit
Reactivity	Human/Mouse

PRODUCT PROPERTIES

Clonality	Polyclonal
Clone ID	
Concentration	Lot specific
Conjugation	Unconjugated
Purification	Affinity purification
Dilution	WB:1:100-1:500
Range	IHC-P:1:50-1:200 ELISA:Recommended starting concentration is 1 Mu g/mL. Please optimize the concentration based on your specific assay requirements.
Formulation	PBS with 0.02% Sodium Azide, 50% Glycerol, pH 7.3.
Isotype	IgG
Storage Instruction	Store at -20°C for up to 1 year from the date of receipt, and avoid repeat freeze-thaw cycles.

TARGET INFORMATION

Gene ID	4153
Gene Symbol	MBL2
Uniprot ID	MBL2_HUMAN
Immunogen	
Immunogen Region	21-248
Specificity	Recombinant fusion protein containing a sequence corresponding to amino acids 21-248 of human MBL2 (NP_000233.1).
Immunogen Sequence	ETVTCEDAQKTCPAVIACSS PGINGFPGKDGRDGTKGEKG EPGQGLRLGLQGPPGKLGPPG NPGPSGSPGPKGQKGDGPKGS PDGDSSLAASERKALQTEMA RIKKWLTFSLGKQVGNKFFL TNGEIMTFEKVKALCVKFQA SVATPRNAAENGAIQNLKE EAFLGITDEKTEGQFVLTG NRLTYTNWNEGEPNAGSDE DCVLLLNKGQWNVPCSTSH LAVCEFP



This product is suitable for in-vitro studies under the RESEARCH USE ONLY [RUO] licence. This product must not be used as for diagnostic or other medical purposes.
St John's Laboratory Ltd, Knowledge Dock Business Centre, University Way, London, E16 2RD | Tel: 0208 223 3081