

Anti-BTAF1 antibody (1600-1849) (STJ28374)

STJ28374

GENERAL INFORMATION

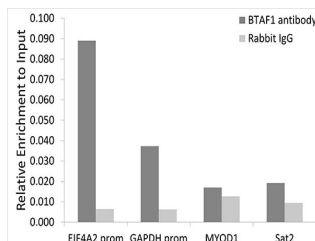
Product Type	Primary antibodies
Short Description	
Applications	WB/IP/ELISA/ChIP
Host/Source	Rabbit
Reactivity	Human/Rat

PRODUCT PROPERTIES

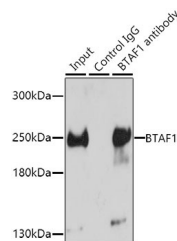
Clonality	Polyclonal
Clone ID	
Concentration	Lot specific
Conjugation	Unconjugated
Purification	Affinity purification
Dilution	WB:1:500-1:2000
Range	IP:0.5 Mu g-4 Mu g antibody for 200 Mu g-400 Mu g extracts of whole cells ELISA:Recommended starting concentration is 1 Mu g/mL. Please optimize the concentration based on your specific assay requirements. ChIP:5 Mu g anti
Formulation	PBS with 0.02% Sodium Azide, 50% Glycerol, pH 7.3.
Isotype	IgG
Storage	Store at-20°C for up to 1 year from the date of receipt, and avoid repeat freeze-thaw cycles.
Instruction	

TARGET INFORMATION

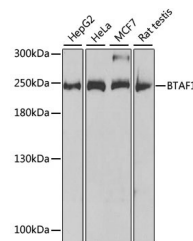
Gene ID	9044
Gene Symbol	BTAF1
Uniprot ID	BTAF1_HUMAN
Immunogen	
Immunogen Region	1600-1849
Specificity	Recombinant fusion protein containing a sequence corresponding to amino acids 1600-1849 of human BTAF1 (NP_003963.1).
Immunogen Sequence	LAVQNSSLHDIQHAPKLSAL KQLLLDCGLGNGSTSESGTE SVVAQHRLIFCQLKSMLEI VEHDLLKPHLPSTVYLRDLG SIPPGQRHSIVSRFNDPSI DVLLLTTHVGGLGLNLTGAD TVVFVEHDWNPMDLQAMDR AHRIGQKRVNVYRLITRGT LEEKIMGLQKFKMNIANTVI SQENSSLQSMGTDQLLDLFT LDKDGKAEKADTSTSGKASM KSILENLSLDWDQEQYDSE



Chromatin immunoprecipitation analysis of extracts of HeLa cells, using BTAF1 antibody (STJ28374) and rabbit IgG. The amount of immunoprecipitated DNA was checked by quantitative PCR. Histogram was constructed by the ratios of the immunoprecipitated DNA to the input.



Immunoprecipitation analysis of 150 Mu g extracts of HeLa cells using 3 Mu g BTAF1 antibody (STJ28374). Western blot was performed from the immunoprecipitate using BTAF1 antibody (STJ28374) at a dilution of 1:500.



Western blot analysis of various lysates using BTAF1 Rabbit polyclonal antibody (STJ28374) at 1:1000 dilution. Secondary antibody: HRP Goat Anti-Rabbit IgG (H+L) (STJ5000856) at 1:10000 dilution. Lysates/proteins: 25 Mu g per lane. Blocking buffer: 3% nonfat dry milk in TBST. Detection: ECL Basic Kit.

This product is suitable for in-vitro studies under the RESEARCH USE ONLY [RUO] licence. This product must not be used as for diagnostic or other medical purposes.
St John's Laboratory Ltd, Knowledge Dock Business Centre, University Way, London, E16 2RD | Tel: 0208 223 3081