

Anti-CD36 antibody (30-439) (STJ28356)
STJ28356

GENERAL INFORMATION

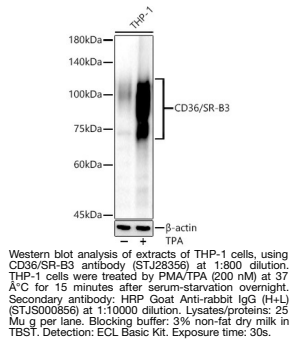
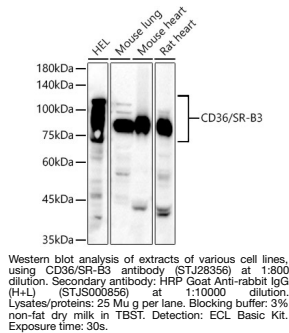
| | |
|--------------------------|-----------------------|
| Product Type | Primary antibodies |
| Short Description | |
| Applications | WB/IHC-P/IF/ICC/ELISA |
| Host/Source | Rabbit |
| Reactivity | Human/Mouse/Rat |

PRODUCT PROPERTIES

| | |
|----------------------|---|
| Clonality | Polyclonal |
| Clone ID | |
| Concentration | Lot specific |
| Conjugation | Unconjugated |
| Purification | Affinity purification |
| Dilution | WB:1:1000-1:5000 |
| Range | IHC-P:1:100-1:500 IF/ICC:1:50-1:200 ELISA:Recommended starting concentration is 1 Mu g/mL. Please optimize the concentration based on your specific assay requirements. |
| Formulation | PBS with 0.05% Proclin300, 50% Glycerol, pH 7.3. |
| Isotype | IgG |
| Storage | Store at-20°C for up to 1 year from the date of receipt, and avoid repeat freeze-thaw cycles. |
| Instruction | |

TARGET INFORMATION

| | |
|---------------------------|--|
| Gene ID | 948 |
| Gene Symbol | CD36 |
| Uniprot ID | CD36_HUMAN |
| Immunogen | |
| Immunogen Region | 30-439 |
| Specificity | Recombinant fusion protein containing a sequence corresponding to amino acids 30-439 of human CD36/SR-B3 (NP_000063.2). |
| Immunogen Sequence | GDLLIQKTIKKQVLEEGTI AFKNWVKTGTEVYRQFWIFD VQNPQEVMMNSSNIQVKQRG PYTYRVRFLENVTQDAED NTVSFLQPNGAIFEPSLSVG TEADNFTVLNLAAVAASHIY QNQFVQMILNSLINKSKSSM FQVRTLRELLWGYRDPFLSL VPYPVTTTVGLFYPYNNNTAD GVYKVFNGKDNISKVAIDT YKGRNLSYWESHCDMINGT DAASFPPFVEKSQVLQFFS |



This product is suitable for in-vitro studies under the RESEARCH USE ONLY [RUO] licence. This product must not be used as for diagnostic or other medical purposes.
St John's Laboratory Ltd, Knowledge Dock Business Centre, University Way, London, E16 2RD | Tel: 0208 223 3081