

Anti-ATF1 antibody (1-210) (STJ28355)
STJ28355

GENERAL INFORMATION

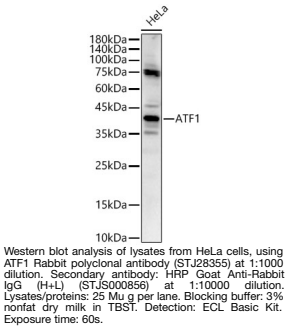
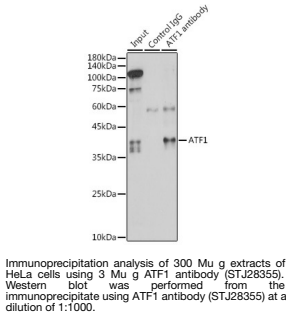
Product Type	Primary antibodies
Short Description	
Applications	WB/IP/ELISA
Host/Source	Rabbit
Reactivity	Human/Mouse

PRODUCT PROPERTIES

Clonality	Polyclonal
Clone ID	
Concentration	Lot specific
Conjugation	Unconjugated
Purification	Affinity purification
Dilution	WB:1:500-1:1000
Range	IP:0.5 Mu g-4 Mu g antibody for 200 Mu g-400 Mu g extracts of whole cells ELISA:Recommended starting concentration is 1 Mu g/mL. Please optimize the concentration based on your specific assay requirements.
Formulation	PBS with 0.02% Sodium Azide, 50% Glycerol, pH 7.3.
Isotype	IgG
Storage Instruction	Store at-20°C for up to 1 year from the date of receipt, and avoid repeat freeze-thaw cycles.

TARGET INFORMATION

Gene ID	466
Gene Symbol	ATF1
Uniprot ID	ATF1_HUMAN
Immunogen	
Immunogen Region	1-210
Specificity	Recombinant fusion protein containing a sequence corresponding to amino acids 1-210 of human ATF1 (NP_005162.1).
Immunogen Sequence	MEDSHKSTTSETAPQPGSAV QGAHISHIAQQVSSLSESEE SQDSSDSIGSSQKAHGILAR RPSYRKILKDLSSDTRGRK GDGENSGVSAAVTSMVPTP IYQTSSGQYIAIAPNGALQL ASPGTDGVQGLQTLTMTNSG STQQGTTILQYAQTSDDGQII LVPSNQVVVQTASGDMQTYQ IRTTPSATSLPQTVVMTSPV TLTQTTKTD



This product is suitable for in-vitro studies under the RESEARCH USE ONLY [RUO] licence. This product must not be used as for diagnostic or other medical purposes.
St John's Laboratory Ltd, Knowledge Dock Business Centre, University Way, London, E16 2RD | Tel: 0208 223 3081