

Anti-SIRT5 antibody (37-310) (STJ28350)

STJ28350

GENERAL INFORMATION

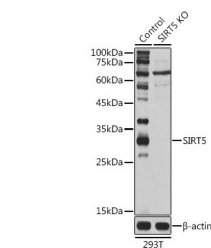
| | |
|--------------------------|--------------------|
| Product Type | Primary antibodies |
| Short Description | |
| Applications | WB/ELISA |
| Host/Source | Rabbit |
| Reactivity | Human/Mouse/Rat |

PRODUCT PROPERTIES

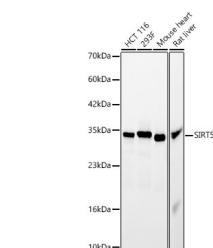
| | |
|----------------------|---|
| Clonality | Polyclonal |
| Clone ID | |
| Concentration | Lot specific |
| Conjugation | Unconjugated |
| Purification | Affinity purification |
| Dilution | WB:1:500-1:1000 |
| Range | ELISA:Recommended starting concentration is 1 Mu g/mL. Please optimize the concentration based on your specific assay requirements. |
| Formulation | PBS with 0.01% Thimerosal, 50% Glycerol, pH 7.3. |
| Isotype | IgG |
| Storage | Store at -20°C for up to 1 year from the date of receipt, and avoid repeat freeze-thaw cycles. |
| Instruction | |

TARGET INFORMATION

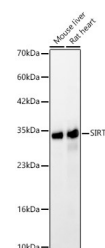
| | |
|-------------------------|--|
| Gene ID | 23408 |
| Gene Symbol | SIRT5 |
| Uniprot ID | SIR5_HUMAN |
| Immunogen | |
| Immunogen Region | 37-310 |
| Specificity | Recombinant fusion protein containing a sequence corresponding to amino acids 37-310 of human SIRT5 (NP_036373.1). SSSMADFRKFFAKAHIVII SGAGVSAESGVPTFRGAGGY WRKWQAQDLATPLAFAHNPS RVWEFYHYRREVVMGSKEPNA GHRAIAECETRLGKQGRRVV VITQNIDELHRKAGTKNLL IHGSLFKTRCTSCGVVAENY KSPICPALSGKGAPEPGTQD ASIPVEKLPRCEEAGCGLL RPHVWVFGENLDPAILLEVD RELAHCDLCLVGTSSWYP AAMFAPQVAARGVPVAEFN |
| Sequence | |



Western blot analysis of extracts from normal (control) and SIRT5 knockout (KO) 293T cells, using SIRT5 antibody (STJ28350) at 1:1000 dilution. Secondary antibody: HRP Goat Anti-rabbit IgG (H+L) (STJS000856) at 1:10000 dilution. Lysates/proteins: 25 Mu g per lane. Blocking buffer: 3% non-fat dry milk in TBST. Detection: ECL Basic Kit. Exposure time: 1s.



Western blot analysis of various lysates, using [KO Validated] SIRT5 rabbit polyclonal antibody (STJ28350) at 1:2000 dilution. Secondary antibody: HRP Goat Anti-rabbit IgG (H+L) (STJS000856) at 1:10000 dilution. Lysates/proteins: 25ug per lane. Blocking buffer: 3% non-fat dry milk in TBST. Detection: ECL Basic Kit. Exposure time: 30s.



This product is suitable for in-vitro studies under the RESEARCH USE ONLY [RUO] licence. This product must not be used as for diagnostic or other medical purposes.
St John's Laboratory Ltd, Knowledge Dock Business Centre, University Way, London, E16 2RD | Tel: 0208 223 3081