

Anti-HEXIM1 antibody (210-359) (STJ28342)
STJ28342

GENERAL INFORMATION

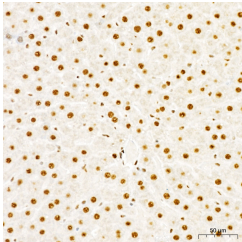
Product Type	Primary antibodies
Short Description	
Applications	WB/IHC-P/ELISA
Host/Source	Rabbit
Reactivity	Human/Mouse/Rat

PRODUCT PROPERTIES

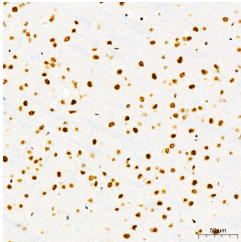
Clonality	Polyclonal
Clone ID	
Concentration	Lot specific
Conjugation	Unconjugated
Purification	Affinity purification
Dilution Range	WB:1:500-1:2000 IHC-P:1:50-1:200 ELISA:Recommended starting concentration is 1 µg/mL. Please optimize the concentration based on your specific assay requirements.
Formulation	PBS with 0.02% Sodium Azide, 50% Glycerol, pH 7.3.
Isotype	IgG
Storage Instruction	Store at -20°C for up to 1 year from the date of receipt, and avoid repeat freeze-thaw cycles.

TARGET INFORMATION

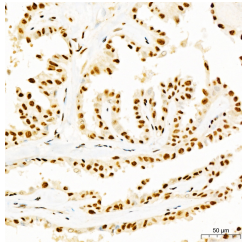
Gene ID	10614
Gene Symbol	HEXIM1
Uniprot ID	HEX11_HUMAN
Immunogen	
Immunogen Region	210-359
Specificity	Recombinant fusion protein containing a sequence corresponding to amino acids 210-359 of human HEXIM1 (NP_006451.1).
Immunogen Sequence	MDDHDQEEPDLKTGLYSKRA AAKSDDTSDDDFMEEGGEED GGSDGMGGDGSEFLQRDFSE TYERYHTESLQNMSKQELIK EYLELEKCLSRMEDENNRLR LESKRLGGDDARVRELELEL DRLRAENLQLLTENELHRQQ ERAPLSKFGD



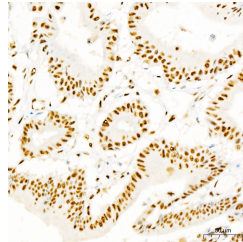
Immunohistochemistry analysis of HEXIM1 in paraffin-embedded rat liver tissue using HEXIM1 Rabbit polyclonal antibody (STJ28342) at a dilution of 1:100 (40x lens). High pressure antigen retrieval was performed with 0.01 M citrate buffer (pH 6.0) prior to immunohistochemistry staining.



Immunohistochemistry analysis of HEXIM1 in paraffin-embedded mouse brain tissue using HEXIM1 Rabbit polyclonal antibody (STJ28342) at a dilution of 1:100 (40x lens). High pressure antigen retrieval was performed with 0.01 M citrate buffer (pH 6.0) prior to immunohistochemistry staining.



Immunohistochemistry analysis of HEXIM1 in paraffin-embedded human thyroid cancer tissue using HEXIM1 Rabbit polyclonal antibody (STJ28342) at a dilution of 1:100 (40x lens). High pressure antigen retrieval was performed with 0.01 M citrate buffer (pH 6.0) prior to immunohistochemistry staining.



Immunohistochemistry analysis of HEXIM1 in paraffin-embedded human colon carcinoma tissue using HEXIM1 Rabbit polyclonal antibody (STJ28342) at a dilution of 1:100 (40x lens). High pressure antigen retrieval was performed with 0.01 M citrate buffer (pH 6.0) prior to immunohistochemistry staining.

This product is suitable for in-vitro studies under the RESEARCH USE ONLY [RUO] licence. This product must not be used as for diagnostic or other medical purposes.
St John's Laboratory Ltd, Knowledge Dock Business Centre, University Way, London, E16 2RD | Tel: 0208 223 3081