

Anti-ST6GAL1 antibody (27-200) (STJ28321)
STJ28321

GENERAL INFORMATION

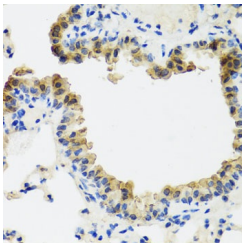
Product Type	Primary antibodies
Short Description	
Applications	WB/IHC-P/ELISA
Host/Source	Rabbit
Reactivity	Human/Mouse/Rat

PRODUCT PROPERTIES

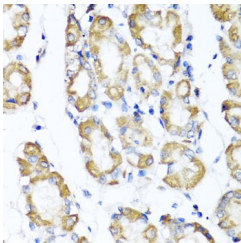
Clonality	Polyclonal
Clone ID	
Concentration	Lot specific
Conjugation	Unconjugated
Purification	Affinity purification
Dilution Range	WB:1:500-1:2000 IHC-P:1:50-1:100 ELISA:Recommended starting concentration is 1 Mu g/mL. Please optimize the concentration based on your specific assay requirements.
Formulation	PBS with 0.02% Sodium Azide, 50% Glycerol, pH 7.3.
Isotype	IgG
Storage Instruction	Store at -20°C for up to 1 year from the date of receipt, and avoid repeat freeze-thaw cycles.

TARGET INFORMATION

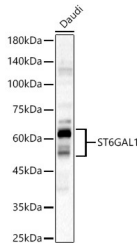
Gene ID	6480
Gene Symbol	ST6GAL1
Uniprot ID	SIAT1_HUMAN
Immunogen	
Immunogen Region	27-200
Specificity	Recombinant fusion protein containing a sequence corresponding to amino acids 27-200 of human ST6GAL1 (NP_775323.1).
Immunogen Sequence	KEKKKGSYYDSFKLQTKFQ VLKSLGKLAMGSDSQSVSS STQDPHRGRQTLGSLRGLAK AKPEASFQVWNKDSSSKNLI PRLQKIWKNYLSMNKYKVS Y KGP GPGIKFSAEALRCHLRD HVNVSMVEVTDFFPNTSEWE GYLPKESIRTKAGPWGRCAV VSSAGLSKSSQLGR



Immunohistochemistry analysis of ST6GAL1 in paraffin-embedded mouse lung using ST6GAL1 Rabbit polyclonal antibody (STJ28321) at dilution of 1:100 (40x lens). Perform microwave antigen retrieval with 10 mM PBS buffer pH 7.2 before commencing with immunohistochemistry staining protocol.



Immunohistochemistry analysis of ST6GAL1 in paraffin-embedded human stomach using ST6GAL1 Rabbit polyclonal antibody (STJ28321) at dilution of 1:100 (40x lens). Perform microwave antigen retrieval with 10 mM PBS buffer pH 7.2 before commencing with immunohistochemistry staining protocol.



Western blot analysis of lysates from Daudi cells, using ST6GAL1 Rabbit polyclonal antibody (STJ28321) at 1:2000 dilution. Secondary antibody: HRP Goat Anti-Rabbit IgG (H+L) (STJ5000656) at 1:10000 dilution. Lysates/proteins: 25 Mu g per lane. Blocking buffer: 3% nonfat dry milk in TBST. Detection: ECL Basic Kit. Exposure time: 60s.

This product is suitable for in-vitro studies under the RESEARCH USE ONLY [RUO] licence. This product must not be used as for diagnostic or other medical purposes.
St John's Laboratory Ltd, Knowledge Dock Business Centre, University Way, London, E16 2RD | Tel: 0208 223 3081