

Anti-HPSE antibody (36-275) (STJ28293)
STJ28293

GENERAL INFORMATION

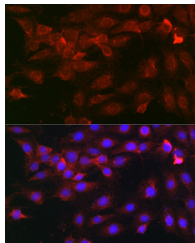
Product Type	Primary antibodies
Short Description	
Applications	WB/IF/ICC/ELISA
Host/Source	Rabbit
Reactivity	Human/Mouse/Rat

PRODUCT PROPERTIES

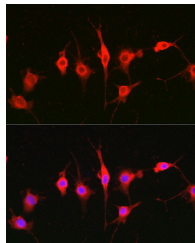
Clonality	Polyclonal
Clone ID	
Concentration	Lot specific
Conjugation	Unconjugated
Purification	Affinity purification
Dilution Range	WB:1:500-1:1000 IF/CC:1:50-1:200 ELISA:Recommended starting concentration is 1 μ g/mL. Please optimize the concentration based on your specific assay requirements.
Formulation	PBS with 0.09% Sodium Azide, 50% Glycerol, pH 7.3.
Isotype	IgG
Storage Instruction	Store at -20°C for up to 1 year from the date of receipt, and avoid repeat freeze-thaw cycles.

TARGET INFORMATION

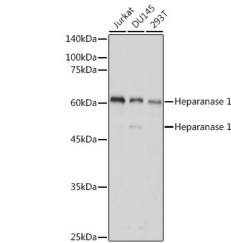
Gene ID	10855
Gene Symbol	HPSE
Uniprot ID	HPSE_HUMAN
Immunogen	
Immunogen Region	36-275
Specificity	Recombinant fusion protein containing a sequence corresponding to amino acids 36-275 of human Heparanase 1 (NP_001092010.1).
Immunogen Sequence	QDVVDLDFFTQEPLHLVSPS FLSVTIDANLATDPRFLILL GSPKLRTLARGLSPAYLRFG GTKTDFLIFDPKKESTFEER SYWQSQVNQDICKYGSIPPD VEEKLRLEWPYQEQLLREH YQKKFNSTYSRSSVDVLYT FANCSGLDLIFGLNALLRTA DLQWNSSNAQLLLDYCSSKG YNISWELGNENPSFLKKADI FINGSQLGEDFIQLHKLLRK STFKNKLYGPDVGQPRRK



Immunofluorescence analysis of C6 cells using Heparanase 1 Rabbit polyclonal antibody (STJ28293) at dilution of 1:100 (40x lens). Blue: DAPI for nuclear staining.



Immunofluorescence analysis of BALB-3T3 cells using Heparanase 1 Rabbit polyclonal antibody (STJ28293) at dilution of 1:100 (40x lens). Blue: DAPI for nuclear staining.



Western blot analysis of extracts of various cell lines, using Heparanase 1 antibody (STJ28293) at 1:1000 dilution. Secondary antibody: HRP Goat Anti-Rabbit IgG (H+L) (STJ5000856) at 1:10000 dilution. Lysates/proteins: 25 μ g per lane. Blocking buffer: 3% nonfat dry milk in TBST. Detection: ECL Basic Kit. Exposure time: 3s.

This product is suitable for in-vitro studies under the RESEARCH USE ONLY [RUO] licence. This product must not be used as for diagnostic or other medical purposes.
St John's Laboratory Ltd, Knowledge Dock Business Centre, University Way, London, E16 2RD | Tel: 0208 223 3081