

## Anti-CRYAA antibody (1-173) (STJ28292)

STJ28292

### GENERAL INFORMATION

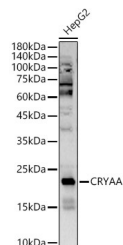
|                          |                           |
|--------------------------|---------------------------|
| <b>Product Type</b>      | Primary antibodies        |
| <b>Short Description</b> |                           |
| <b>Applications</b>      | WB/IF/ICC/ELISA           |
| <b>Host/Source</b>       | Rabbit                    |
| <b>Reactivity</b>        | Human/Mouse/Rat/Zebrafish |

### PRODUCT PROPERTIES

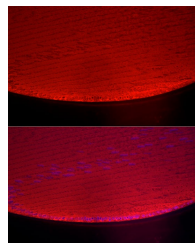
|                            |                                                                                                                                        |
|----------------------------|----------------------------------------------------------------------------------------------------------------------------------------|
| <b>Clonality</b>           | Polyclonal                                                                                                                             |
| <b>Clone ID</b>            |                                                                                                                                        |
| <b>Concentration</b>       | Lot specific                                                                                                                           |
| <b>Conjugation</b>         | Unconjugated                                                                                                                           |
| <b>Purification</b>        | Affinity purification                                                                                                                  |
| <b>Dilution</b>            | WB:1:2000-1:6000                                                                                                                       |
| <b>Range</b>               | IF/CC:1:50-1:200                                                                                                                       |
|                            | ELISA:Recommended starting concentration is 1 $\mu$ g/mL. Please optimize the concentration based on your specific assay requirements. |
| <b>Formulation</b>         | PBS with 0.02% Sodium Azide, 50% Glycerol, pH 7.3.                                                                                     |
| <b>Isotype</b>             | IgG                                                                                                                                    |
| <b>Storage Instruction</b> | Store at -20°C for up to 1 year from the date of receipt, and avoid repeat freeze-thaw cycles.                                         |

### TARGET INFORMATION

|                           |                                                                                                                                                                                           |
|---------------------------|-------------------------------------------------------------------------------------------------------------------------------------------------------------------------------------------|
| <b>Gene ID</b>            | 102724652/1409                                                                                                                                                                            |
| <b>Gene Symbol</b>        | CRYAA                                                                                                                                                                                     |
| <b>Uniprot ID</b>         | CRYAA_HUMAN                                                                                                                                                                               |
| <b>Immunogen</b>          |                                                                                                                                                                                           |
| <b>Immunogen Region</b>   | 1-173                                                                                                                                                                                     |
| <b>Specificity</b>        | Recombinant fusion protein containing a sequence corresponding to amino acids 1-173 of human CRYAA (NP_000385.1).                                                                         |
| <b>Immunogen Sequence</b> | MDVTIQHPWFKRTLGPFPYS RLFQQFFGEGLEFYDLLPFL SSTISPYRQSLFRTVLD SG ISEVRSDRDKFVFLDVKHF<br>SPEDLTVKVQDDFVEIHGKH NERQDDHGYISREFHRRYRL PSNVDQSALSCSLADGMLT FCGPKIQTGLDATHAERAIP<br>VSREEKPTSAPSS |



Western blot analysis of HepG2, using CRYAA antibody (STJ28292) at 1:5000 dilution. Secondary antibody: HRP-Goat Anti-rabbit IgG (H+L) (STJ5000856) at 1:10000 dilution. Lysates/proteins: 25  $\mu$ g per lane. Blocking buffer: 3% non-fat dry milk in TBS-T. Detection: ECL Basic Kit. Exposure time: 180s.



Immunofluorescence analysis of Rat Eye using CRYAA rabbit polyclonal antibody (STJ28292) at dilution of 1:200 (40x lens). Blue: DAPI for nuclear staining.

This product is suitable for in-vitro studies under the RESEARCH USE ONLY [RUO] licence. This product must not be used as for diagnostic or other medical purposes.

St John's Laboratory Ltd, Knowledge Dock Business Centre, University Way, London, E16 2RD | Tel: 0208 223 3081